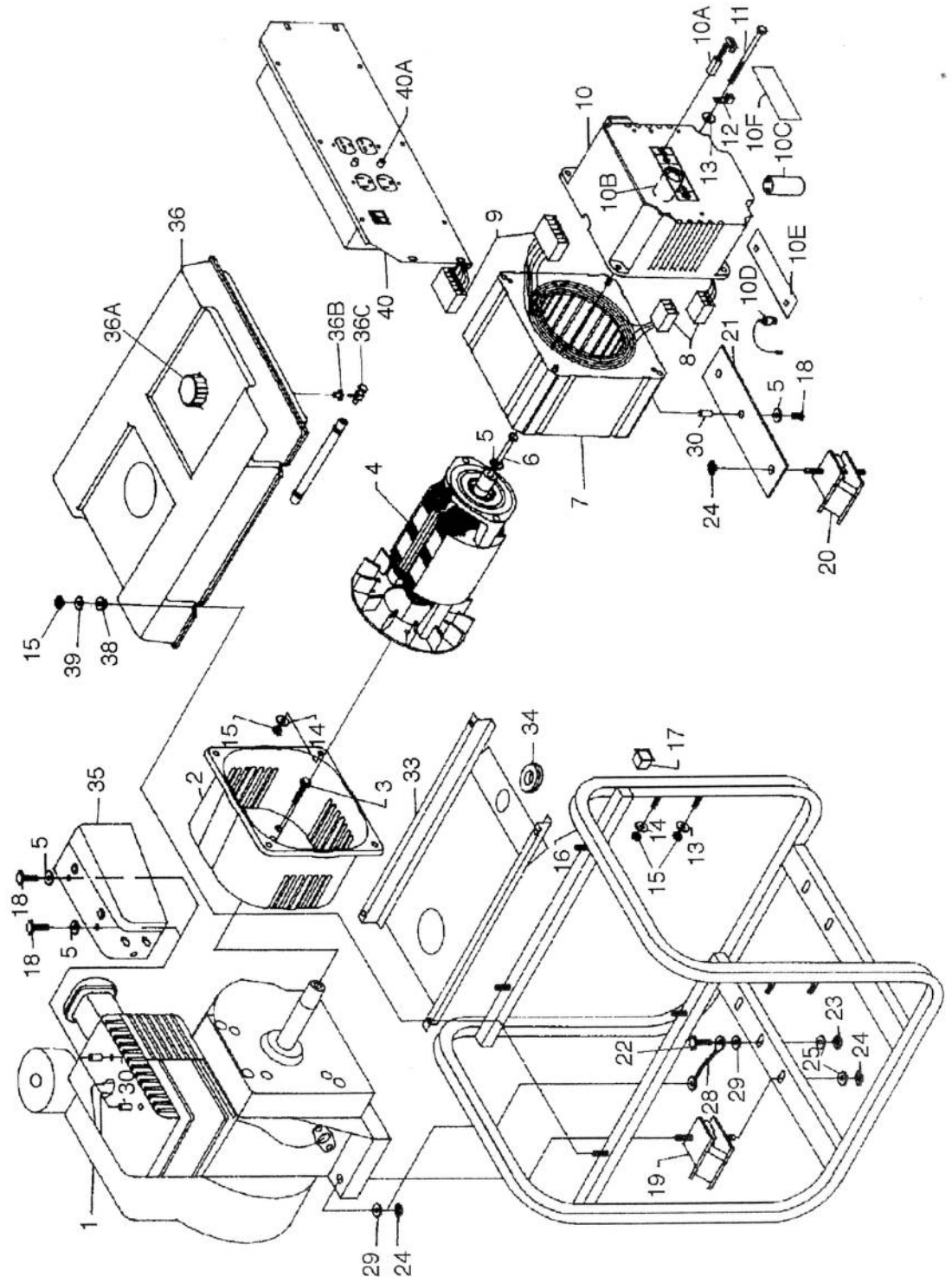


SERVICE PARTS LIST

MODEL  
GEN MAXA ER+ 4KW LA  
GEN MAXA ER+ 4KW  
GEN MAXA ER+ 4KW LA  
GEN MAXA ER+ 4KW  
GEN MAXA ER 5KW

PART NUMBER  
PL0524302  
PM0524302  
PL0524604  
PM0524604  
PM0525302.01



**SERVICE PARTS LIST**

**MODEL**  
**GEN MAXA 4KW ER+**  
**GEN MAXA 4KW ER+**  
**GEN MAXA 4KW ER+**  
**GEN MAXA 5KW ER+**

**PART NUMBER**  
**PL0524302**  
**PM0524302**  
**PM0524604**  
**PM0525302.01**

REF. NO.	PART NO.	DESCRIPTION	MODEL NUMBER					
			PL0524302	PM0524302	PL0524604	PM0524604	PM0525302	
1	NOTE A	ENGINE, 8 HP LO STD						
1	NOTE A	ENGINE, 9 HP LO STD						
1	NOTE A	ENGINE, 10 HP LO STD			1	1		
2	0050266	ADAPTER, ENGINE 4-5KW						1
2	0054052	ADAPTER, ENGINE 4-5KW	1	1				1
4	0049619	ROTOR, 4KW TEC RF5			1	1		
4	0050584	ROTOR, 4.6KW TEC RF5	1	1				
4	0049621	ROTOR, 5KW TEC RF5			1	1		
7	0055507	STATOR, 4KW 60HZ						1
7	0055508	STATOR, 4.6KW 60HZ	1	1				
7	0055510	STATOR, 5KW 60HZ			1	1		
8	0048640	CONNECTOR HSG. SET, E/B						1
9	0034801	CONNECTOR HSG. SET, PANEL	1	1	1	1	1	1
10	0050265.01	ENDBELL, WIRED COMPLETE RED	1	1	1	1	1	1
10	0048872.01	ENDBELL, WIRED COMPLETE GREEN	1	1				1
10A	0050439	BRUSH, E-4R			1	1		
10B	0035188	BEARING, NEEDLE FTT-1212	2	2	2	2	2	2
10C	0034819.01	CAPACITOR, 130MF	1	1	1	1	1	1
10D	0034843	DIODE	2	2	2	2	2	2
10E	0038976	HEAT SINK FOR DIODE	1	1	1	1	1	1
10F	0050323	COVER, BRUSH RED	1	1				1
10F	0038968	COVER, BRUSH GREEN						
10H	0051093	TOLERANCE RING			1	1		
10I	0050397	RETAINING CLIPS	1	1	1	1	1	1
10J	0051555	SHIELD, ENDBELL	2	2	2	2	2	2
12	0008854	LUG, GROUND	1	1	1	1	1	1
16	0050205.01	CARRIER, ASSEMBLY, 4-5KW	1	1	1	1	1	1
17	0048837	CAP, PLASTIC	1	1	1	1	1	1
19	0055526	ISOLATOR, ENGINE	4	4	4	4	4	4
19	0055524	ISOLATOR, ENGINE			2	2		
20	0055525	ISOLATOR, STATOR	2	2				2
21	0049693	BRACKET, STATOR	2	2	2	2	2	2
21	0050134	BRACKET, STATOR	1	1				1
28	0049224	ASSY, GROUND WIRE BRAIDED			1	1		
30	0048586	SPACER, 7/16"	1	1	1	1	1	1
32	0047796	SPACER, 3/4"	3	3	2	2	3	
33	0049453.02	SHIELD, HEAT			1	1		
34	0050002	GROMMET	1	1	1	1	1	1
35	0050276.01	ASSY DEFLECTOR	1	1	1	1	1	1
36	0050273	TANK ASSY, COMPLETE	1	1	1	1	1	1
36A	0050322	CAP, FUEL	1	1	1	1	1	1
36B	0049113	BUSHING, FUEL	1	1	1	1	1	1
36C	0049114	VALVE, FUEL	1	1	1	1	1	1
38	0048243	BUSHING, STEP	1	1	1	1	1	1
40	0050569	PANEL, WIRED COMPLETE 4KW LA	4	4	4	4	4	4
40	0050257.01	PANEL, WIRED COMPLETE 4KW	1					
40	0050585.01	PANEL, WIRED COMPLETE 4.6KW LA		1				
40	0050612.02	PANEL, WIRED COMPLETE 4.6KW			1			
40	0050258.01	PANEL, WIRED COMPLETE 5KW					1	
40A	0049459	CIRCUIT BREAKER, 18 AMP						1
40A	0049071	CIRCUIT BREAKER, 20 AMP	1		1			
40A	0049072	CIRCUIT BREAKER, 25 AMP		2		2		
								2

**NOTE A:** COLEMAN POWERMATE WILL NOT PROVIDE ENGINES AS REPLACEMENT PARTS. ENGINES ARE COVERED THROUGH THE ENGINES MANUFACTURER'S WARRANTY.

START DATE: 11/1/97

REVISED: