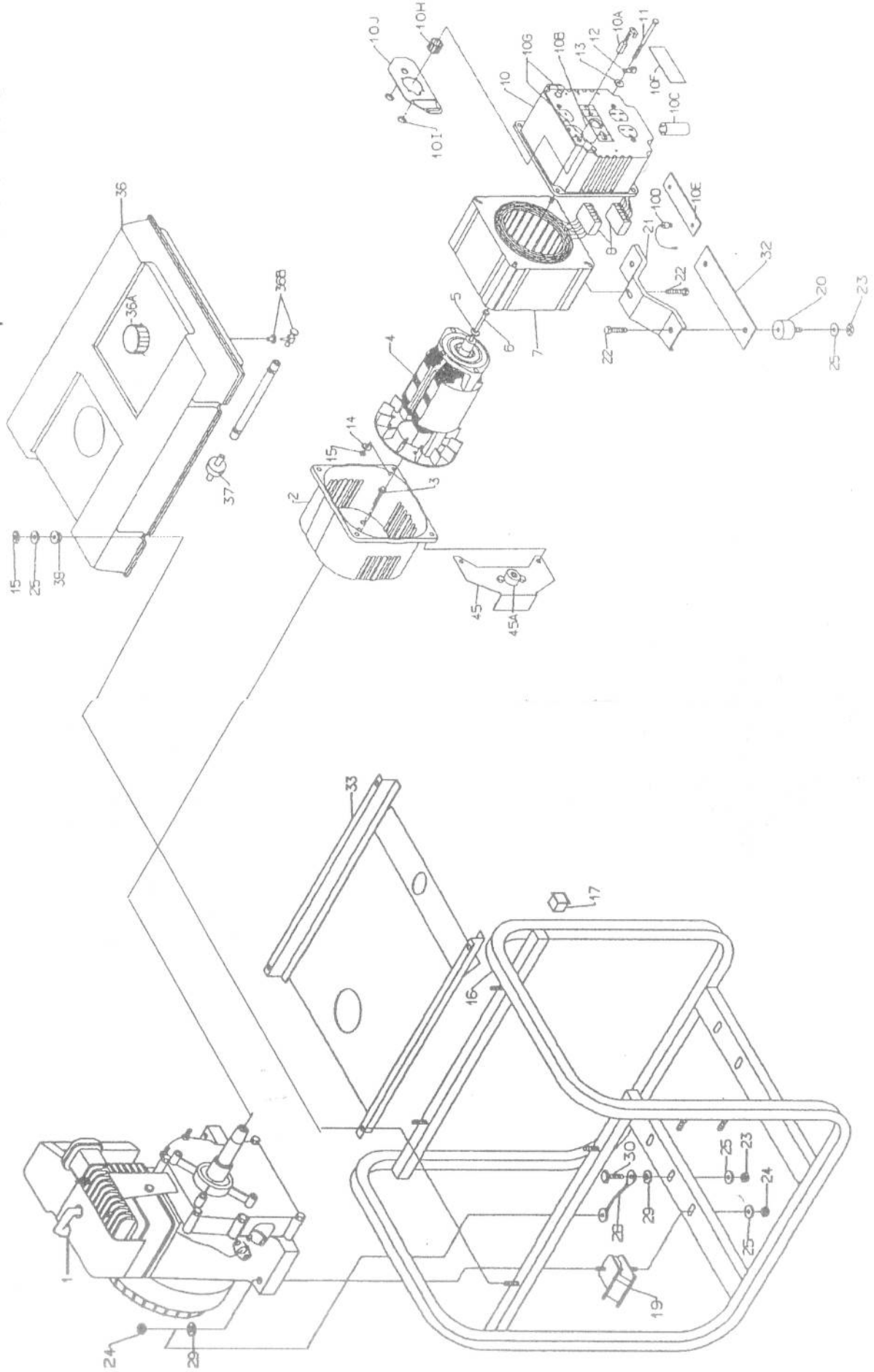


# POWERBASE ER SERIES

PM0545202



PM0545202

Powerbase & Powerbase ER Parts List

REF. NO.	PART NO.	DESCRIPTION	WATTS			ER	ER
			2250	2400	4000		
1	Note A	Engine, 5 HP	1	1	1	1	1
1	Note A	Engine, 8 HP					
1	Note A	Engine, 10 HP					
2	0049915	Adapter, Engine 2 KW	1	1	1	1	1
2	0034751	Adapter, Engine 3 & 5 KW	1	1	1	1	1
3	0000901	Bolt, Wz 5/16-24 x 5/8	4	4	4	4	4
3	0000919.01	Bolt, Wz 3/8-16 x 3/4	1	1	1	1	1
4	0051249	Rotor, 2 KW B/S					
4	0050772	Rotor, 2.4 KW B/S					
4	0049679	Rotor, 4 KW B/S					
4	0049620	Rotor, 5 KW B/S					
5	Note B	Washer, Lock 5/16	2	3	2	1	1
6	0035030	Bolt, Hex 5/16-24 x 6	1	1	1	1	1
6	0050788	Bolt, Hex 5/16-24 x 6-1/4					
6	0041483	Bolt, Hex 5/16-24 x 5-3/4					
6	0035055	Bolt, Hex 5/16-24 x 6-5/8					
7	0051250	Stator, 2 KW, 60 Hz	1	1	1	1	1
7	0052055	Stator, 2.4 KW, 60 Hz					
7	0049790	Stator, 4 KW, 60 Hz					
7	0049795	Stator, 5 KW, 60 Hz					
8	0049835	Connector Hsg. Set, Endbell	1	1	1	1	1
8	0034801	Connector Hsg. Set, Endbell	1	1	1	1	1
10	0051252	Endbell, Wired Complete	1	1	1	1	1
10	0051978	Endbell, Wired Complete					
10	0048838	Endbell, Wired Complete					
10	0048839.01	Endbell, Wired Complete					
10A	0050439	Brush, E-4R					
10B	0035188	Bearing, Needle FTT-1212					
10C	0051251	Capacitor, 12 mfd					
10C	0034819.01	Capacitor					
10D	0006296	Diode Assembly					
10E	0038976	Heat Sink, Diode					
10F	0038968	Cover, Brush					
10G	0049071	CB 20 Amp	2	2	2	2	2
10G	0049072	CB 25 Amp	1	1	1	1	1
10H	0051093	Tolerance Ring	1	1	1	1	1
10I	0050397	Retaining Clips	2	2	2	2	2
10J	0051080	Shield, Endbell	1	1	1	1	1
11	0040790	Bolt, Hex Hd 1/4-20 x 3-3/4	4	4	4	4	4
11	0050775	Bolt, Hex Hd 1/4-20 x 4					
11	0034561	Bolt, Hex Hd 1/4-20 x 5					
11	0040816	Bolt, Hex Hd 1/4-20 x 6					
12	0008854	Lug, Ground					
13	Note B	Washer, Flat 1/4	1	1	1	1	1
14	Note B	Washer, Star External 1/4	4	4	4	4	4
15	0040832	Nut, Nylon 1/4-20	1	1	1	1	1
16	0037952	Carrier, Assy 54-2	4	4	4	4	4
16	0052282	Carrier, Assy 54-2	1	1	1	1	1

Powerbase & Powerbase ER Parts List

REF. NO.	PART NO.	DESCRIPTION	WATTS			ER	ER
			2250	2400	4000		
16	0037986	Carrier, Assy 54-5					
16	0049454	Carrier, Assy 54-4 ER	1			1	1
17	0048837	Cap, Plastic					4
18	0038596	Pkg., Rubber Feet	4			4	2
19	0048831	Isolator, Engine		2			2
19	0051094	Isolator, Engine					
20	0035121	Isolator, Stator	1			1	
20	0049743	Isolator, Stator					2
20	0051094	Isolator, Stator					1
21	0049693	Bracket, Stator					
22	Note B	Bolt, 5/16-18 x 5/8	1			1	
22	Note B	Bolt, 5/16-18 x 1-3/4					2
22	0049279	Bolt, Wz 5/16-18 x 1/2					1
23	0048736	Nut, Nylon 5/16-18					3
24	0080101	Nut, Nylon 5/16-24	2			2	4
25	Note B	Washer, Flat 5/16	4			4	9
26	Note B	Bolt, 5/16-24 x 1-1/2	2			2	
26	Note B	Bolt, 5/16-24 x 1-3/4					2
27	0047796	Spacer, 3/4"					
27	0039024	Spacer, 1"					
28	0049224	Assy, Ground Wire Braided					1
29	Note B	Washer, Star External 5/16					2
30	Note B	Bolt, Hex 5/16-18 x 3/4	1			1	1
33	0049453.01	Shield, Heat					1
36	0050122	Tank Assembly, Complete					1
36A	0050322	Cap, Fuel					1
36B	0049114	Fuel, Valve with Bushing					1
37	0047790	Filter, Fuel					1
38	0048243	Bushing, Step					1
45	0049897	Assy, Elec. Start					1
45A	0030148	Switch, DR - 450 A.					4

Electric start models  
Electric start models

**Note A:** Coleman Powermate will not provide engines as replacement parts. Engines are covered through the engine manufacturer's warranty. Consult the accompanying engine manual or contact our service department for assistance.

**Note B:** These are standard parts available at your local hardware store.



**WARNING:** To avoid possible personal injury or equipment damage, a registered electrician or an authorized service representative should perform installation and all service. Under no circumstances should an unqualified person attempt to wire into an utility circuit.