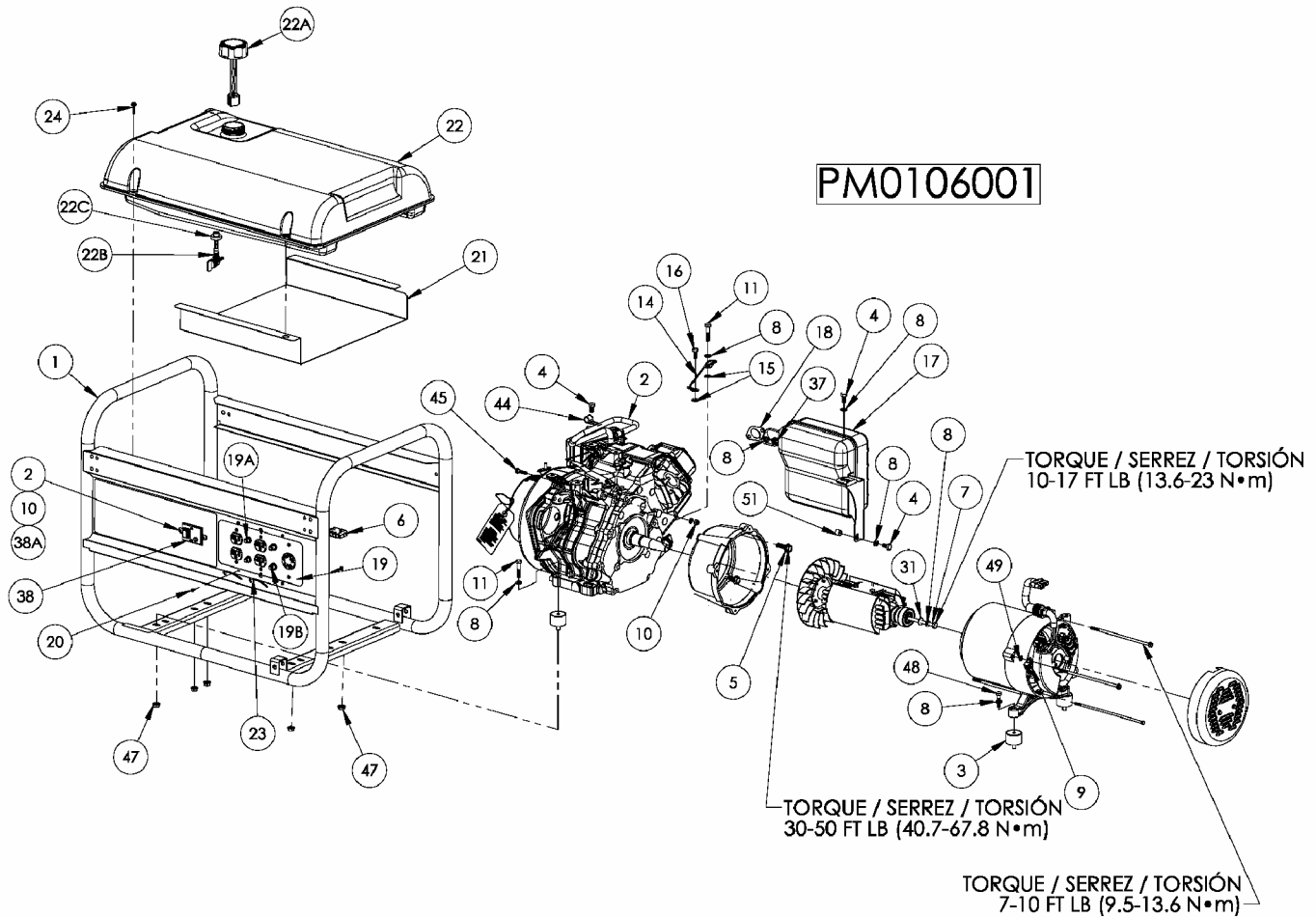


PARTS DRAWING / SCHEMA DES PIÈCES / DIAGRAMA DE PIEZAS



Note A: These are standard parts available at your local hardware store.

Note B: Contact your nearest Powermate Corporation Service Center for replacement fuel tanks.



WARNING: To avoid possible personal injury or equipment damage, a registered electrician or an authorized service representative should perform installation and all service. Under no circumstances should an unqualified person attempt to wire into a utility circuit.

Remarque A: Ces pièces sont des pièces standard disponibles en quincaillerie.

Remarque B: Pour commander un réservoir de recharge, contacter Centre de service Powermate Corporation le plus proche.



AVERTISSEMENT: Pour éviter toute blessure personnelle ou dommage à l'équipement, l'installation et tout entretien devraient être effectués par un électricien qualifié ou un préposé au service autorisé. En aucun cas, une personne non-qualifiée ne devrait essayer de faire le raccord au circuit principal.

Nota A: Estas son piezas estándar disponibles en su ferretería local.

Nota B: Para hacer pedidos de tanques, localice el Centro de Servicio de Powermate Corporation más cercano.



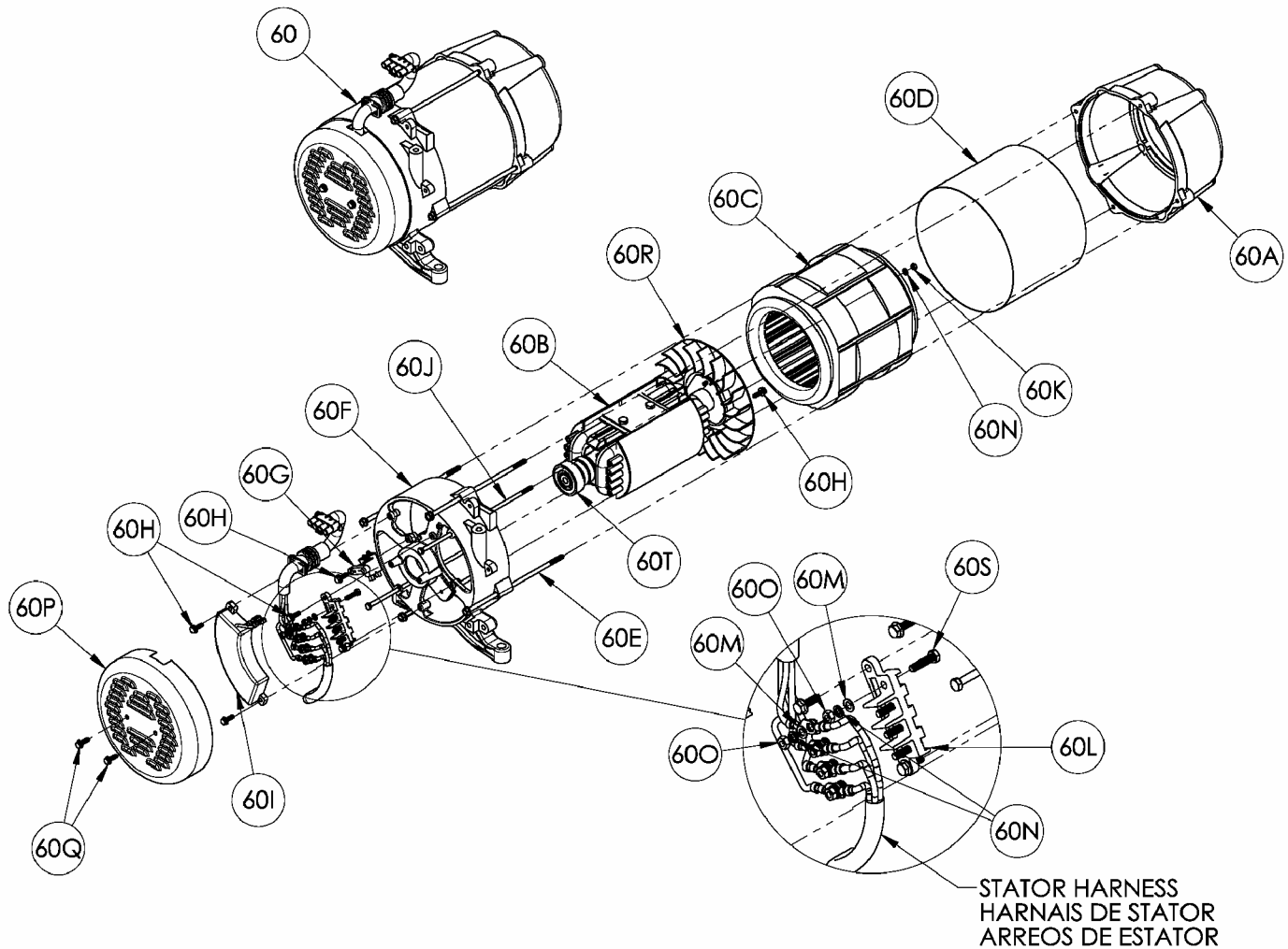
ADVERTENCIA: Para evitar posibles lesiones físicas o daños materiales, es necesario que la instalación y todo el servicio sea realizado por un electricista matriculado o representante de servicio autorizado. Bajo ninguna circunstancia debe permitirse que una persona que no está capacitada trate de manipular cables dentro del circuito de servicio eléctrico.

PARTS LIST / LISTE DES PIÈCES / LISTA DE PIEZAS

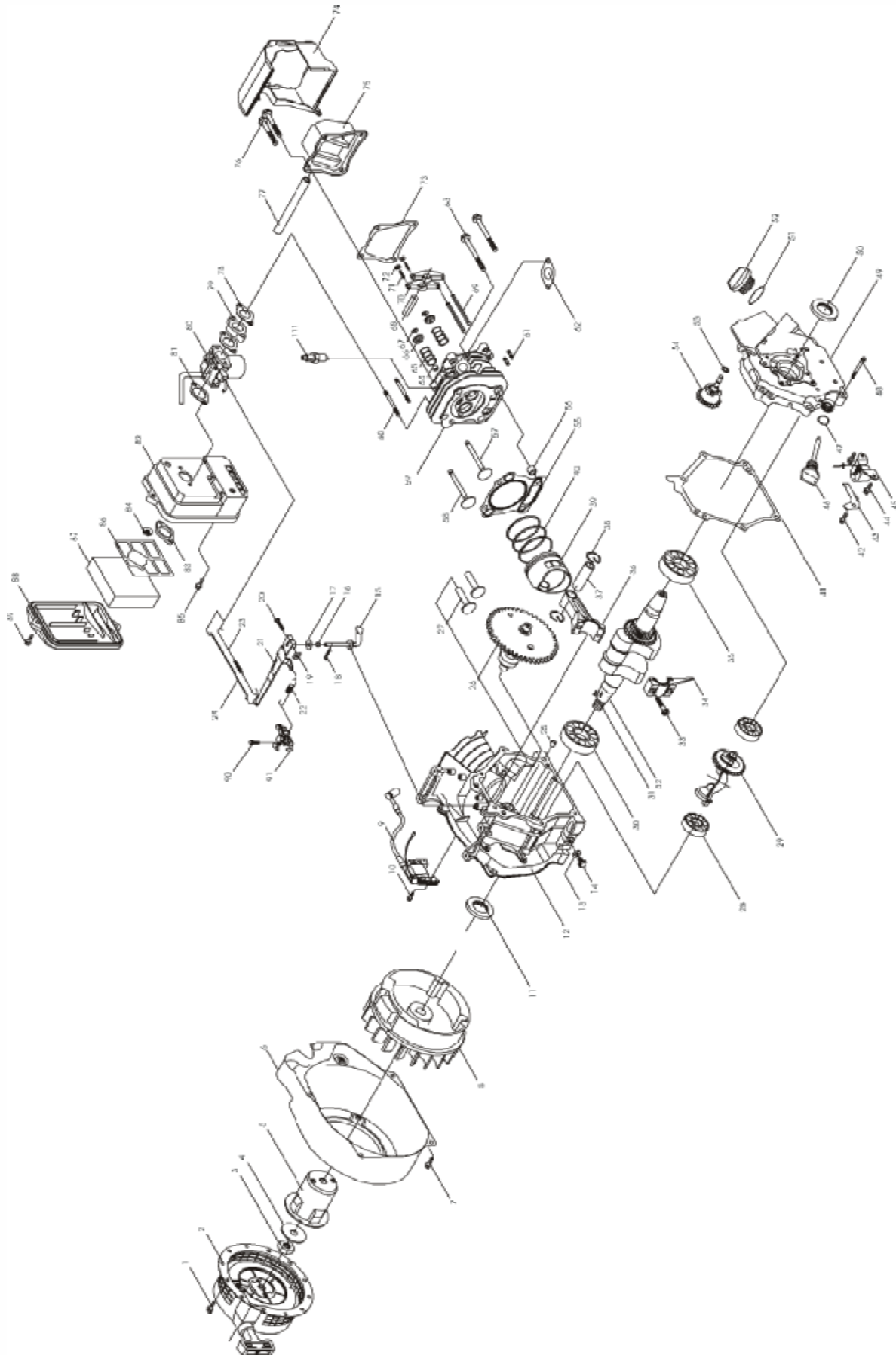
| REF. NO. | PART NO. | DESCRIPTION | DESCRIPTION | DESCRIPCIÓN | QTY |
|----------|------------|----------------------------|---------------------------------------|--------------------------------|-----|
| 1 | 0064280 | Carrier, assembly | Ensemble transport | Transportador, conjunto | 1 |
| 2 | 0064187 | Engine 12HP Sumec | Moteur | Motor | 1 |
| 3 | 0051094 | Isolator | Sectionneur | Aislador | 4 |
| 4 | 0049268 | Bolt M8 x 16mm | Boulon | Perno | 3 |
| 5 | 0057512 | Bolt whz 3/8-16 x 1 1/4 | Boulon | Perno | 4 |
| 6 | 0062797 | Connector, panel | Connecteur, tableau | Conector, panel | 1 |
| 7 | 0046540.03 | Bolt, hex 5/16-24 x 9.00 | Boulon | Boulon | 1 |
| 8 | Note A | Washer, lock 5/16 | Contre-écrou 5/16 | Arandela, de cierre 5/16 | 9 |
| 9 | 0008854 | Lug, ground | Oeillet de mise à la terre | Terminal, tierra | 1 |
| 10 | 0040832 | Nut, nyloc 1/4-20 | Écrous nyloc 1/4-20 | Tuerca, nyloc 1/4-20 | 5 |
| 11 | Note A | Bolt, 5/16-18 x 1 1/2 | Boulon | Perno | 2 |
| 12 | Note A | Washer, flat 5/16 | Rondelle plates 5/16 | Arandela, plana 5/16 | 4 |
| 13 | 0048736 | Nut, nyloc 5/16-18 | Écrous nyloc 5/16-18 | Tuerca, nyloc 5/16-18 | 4 |
| 14 | 0049224 | Assembly, ground wire | Ensemble fil de masse tressé a tierra | Conjunto, cable trenzado | 1 |
| 15 | Note A | Washer, star external 5/16 | Rondelle à dents externa 5/16 | Arandela, estrella | 2 |
| 16 | Note A | Bolt, hex 5/16-18 x 3/4 | Boulon, tête hex 5/16-18 x 3/4 | Perno | 1 |
| 17 | 0064223 | Muffler | Silencieux | Silenciador | 1 |
| 18 | 0063362 | Gasket | Joint | Empaquetadura | 1 |
| 19 | 0063179 | Panel, wired | Tableau complet câblé | Panel, cabeado completo | 1 |
| 19A | 0049071 | Circuit Breaker 20 amp | Disjoncteurs 20 amp | Cortacircuitos 20 amp | 2 |
| 19B | 0049382 | Circuit Breaker 30 amp | Disjoncteurs 30 amp | Cortacircuitos 30 amp | 2 |
| 20 | 0062462 | Screw #6-20 x .38 Type B | Vis | Tornillo | 4 |
| 21 | 0063154 | Shield, heat | Écran de chaleur | Pantalla para el calor | 1 |
| 22 | Note B | Fuel tank assembly | Ensemble complet du réservoir | Conjunto tanque | 1 |
| 22A | 0056231 | Fuel Cap | Capuchon | Tapa de combustible | 1 |
| 22B | 0061756 | Fuel shut off with filter | Robinet de carburant | Válvula combustible con filtro | 1 |
| 22C | 0062673 | Fuel Bushing | Bague d'essence | Buje de combustible | 1 |
| 23 | 0055982.01 | Cord Keeper™ | Cord Keeper™ | Cord Keeper™ | 2 |
| 24 | 0058618 | Screw #10 x 1 | Vis | Tornillo | 4 |
| 25 | 0064308 | Handle | Poignée | Manija | 2 |
| 26 | Note A | Bolt, 5/16-18 x 2 1/4 | Boulon | Perno | 2 |
| 27 | Note A | Washer, flat 3/8 | Rondelle plates 3/8 | Arandela, plana 3/8 | 2 |
| 28 | 0057704 | Wheel | Roue | Rueda | 2 |
| 29 | 0055894 | Rubber Foot | Pied | Pie | 2 |
| 30 | 0062174 | Lanyard | Lanyard | Acollador | 2 |
| 31 | 0058933 | Washer, flat 1/4 W | Rondelle plates 1/4 large | Arandela, plana 1/4 lejos | 1 |
| 32 | Note B | Bolt, 3/8-16 x 4.25 | Boulon | Perno | 2 |
| 33 | 0057578 | Nut, nyloc 3/8-16 | Écrous nyloc 3/8-16 | Tuerca, nyloc 3/8-16 | 2 |
| 34 | 0062502 | Pin, release | Épingle de relâchement | Alfileres de la liberación | 2 |
| 35 | 0058955 | Cap, plastic | Capuchon | Tapa | 2 |
| 36 | Note A | Washer, flat 1/4 | Rondelle plates 1/4 | Arandela, plana 1/4 | 2 |
| 37 | 0061393 | Nut whz 8mm | Écrous | Tuerca | 2 |
| 38 | 0064286 | Switch, Rocker | Interrupteur | Interruptor | 1 |
| 38A | 0064390 | Screw, Torx 1/4-20 x 1 1/4 | Vis, Torx | Tornillo, Torx | 2 |
| 39 | 0062433 | Wheel spacer | Bague d'espacement | Espaciador de la rueda | 2 |
| 40 | 0062495 | Grip, handle | Poignée | Empuñadura | 2 |
| 41 | Note A | Bolt, 5/16-18 x 1 | Boulon | Perno | 2 |
| 42 | Note A | Bolt, 1/4-20 x 1 1/2 | Boulon | Perno | 2 |
| 43 | 0063546 | Bracket, foot | Support de pied | Soporte del pie | 1 |
| 44 | 0052931 | Clamp J | Collier | Abrazadera | 1 |
| 45 | Note A | Bolt, 1/4-20 x 1 | Boulon | Perno | 1 |
| 46 | 0063164 | Spacer, handle bracket | Entretoise | Espaciador | 2 |
| 47 | 0057254 | Nut, hex flg 5/16-18 | Écrous 5/16-18 | Tuerca 5/16-18 | 5 |
| 48 | Note A | Bolt, 5/16-18 x 1 1/4 | Boulon | Perno | 2 |
| 49 | Note A | Washer, star external 1/4 | Rondelle à dents externa 1/4 | Arandela, estrella | 1 |
| 50 | 0049352 | Washer, flat 5/16 W | Rondelle plates 5/16 large | Arandela, plana 5/15 lejos | 4 |
| 51 | 0048586 | Spacer | Entretoise | Espaciador | 3 |

PARTS LIST / LISTE DES PIÈCES / LISTA DE PIEZAS

| Ref No. | Part No. | Description | Description | Descripción | Qty |
|---------|----------|-----------------------|------------------------------------|-------------------------------------|-----|
| 60 | 0063262 | Generator head, Sumec | Tête de la génératrice, Sumec | Cabezal del generador, Sumec | 1 |
| 60A | 0063300 | Adapter, engine | Adaptateur pour moteur | Adaptor, motor | 1 |
| 60B | 0063301 | Rotor | Rotor | Rotor | 1 |
| 60C | 0063302 | Stator | Stator | Estator | 1 |
| 60D | 0063303 | Band, stator cover | Bande | Banda | 1 |
| 60E | 0063304 | Bolt, M6 x 180 | Boulon | Perno | 4 |
| 60F | 0063229 | Support, bearing | Support, roulement | Soporte, Cojinete | 1 |
| 60G | 0063230 | Brush module | Brosser le module | Cepille módulo | 1 |
| 60H | 0063231 | Screw flg M5 x 16mm | Vis | Tornillo | 8 |
| 60I | 0063291 | AVR module | La tension automatique régulatrice | El regulador automático del voltaje | 1 |
| 60J | 0063233 | Bolt, M5 x 220 | Boulon | Perno | 2 |
| 60K | 0063235 | Nut, nyloc M5 | Écrous nyloc | Tuerca nyloc | 2 |
| 60L | 0063236 | Terminal block | Bloc délimitant | Bloque terminal | 1 |
| 60M | 0063237 | Washer M5 | Rondelle | Arandela | 8 |
| 60N | 0063238 | Washer, lock M5 | Contre-écrou | Arandela, de cierre | 10 |
| 60O | 0063239 | Nut M5 | Écrous | Tuerca | 8 |
| 60P | 0063240 | Cover, end | Couvercle | Tapa | 1 |
| 60Q | 0063241 | Screw flg M5 x 8mm | Vis | Tornillo | 2 |
| 60R | 0063225 | Fan | Ventilateur | Ventilador | 1 |
| 60S | 0063364 | Screw M5 x 20mm | Vis | Tornillo | 4 |
| 60T | 0063365 | Bearing | Roulement | Cojinete | 1 |



ENGINE / MOTEUR / MOTOR
PARTS DRAWING / SCHEMA DES PIÈCES / DIAGRAMA DE PIEZAS



ENGINE / MOTEUR / MOTOR
PARTS LIST / LISTE DES PIÈCES / LISTA DE PIEZAS

| REF. NO. | PART NO. | DESCRIPTION | DESCRIPTION | DESCRIPCIÓN | QTY |
|----------|----------|------------------------|---------------------------------|--------------------------------|-----|
| 1 | 0064319 | Screw M6 x 10 | Vis | Tornillo | 4 |
| 2 | 0064320 | Engine recoil assembly | Moteur recule l'assemblée | Asamblea de retráctil de motor | 1 |
| 3 | 0064321 | Nut M18 x 1.5 | Écrous | Tuerca | 1 |
| 4 | 0064322 | Washer | Rondelle | Arandela | 1 |
| 5 | 0064323 | Starter pulley | Poulie | Polea | 1 |
| 6 | 0064324 | Fan case | Ventilateur le cas | Ventilador el caso | 1 |
| 7 | 0064325 | Screw M6 x 10 | Vis | Tornillo | 5 |
| 8 | 0064326 | Flywheel | Volant-moteur | Volante | 1 |
| 9 | 0064327 | Ignition module | Module d'allumage | Módulo de ignición | 1 |
| 10 | 0064328 | Screw M6 x 25 | Vis | Tornillo | 2 |
| 11 | 0064329 | Oil seal | Joint | Sello | 2 |
| 12 | 0064330 | Crankcase | Carter | Cárter | 1 |
| 13 | 0064331 | Washer | Rondelle | Arandela | 2 |
| 14 | 0064332 | Screw M10-1.25 | Vis | Tornillo | 2 |
| 15 | 0064333 | Governor shaft | Arbre de gouverneur | Túnel de gobernador | 1 |
| 16 | 0064334 | Oil seal | Joint | Sello | 1 |
| 17 | 0064335 | Washer | Rondelle | Arandela | 2 |
| 18 | 0064336 | Clip | Attache | Presilla | 1 |
| 19 | 0064337 | Nut M6 | Écrous | Tuerca | 1 |
| 20 | 0064338 | Screw M6 x 30 | Vis | Tornillo | 1 |
| 21 | 0064339 | Governor arm | Bras de gouverneur | Brazo de gobernador | 1 |
| 22 | 0064340 | Spring | Ressort | Resorte | 1 |
| 23 | 0064341 | Spring | Ressort | Resorte | 1 |
| 24 | 0064342 | Link rod | Tige | Varilla | 1 |
| 25 | 0064343 | Dowel pin | Goupille | Pasador | 2 |
| 26 | 0064344 | Camshaft assembly | Arbre à cames | Arbol de levas | 1 |
| 27 | 0064345 | Valve lifter | Lifter de soupape | Alzador de válvula | 2 |
| 28 | 0064346 | Bearing 6202 | Roulement | Cojinete | 2 |
| 29 | 0064347 | Balance shift | Equilibrer le changement | Equilibre el cambio | 1 |
| 30 | 0064348 | Bearing 6307 | Roulement | Cojinete | 2 |
| 31 | 0064349 | Key 4 x 6.5 x 16mm | Clé | Chaveta | 1 |
| 32 | 0064350 | Crankshaft assembly | Vilbrequin | Cigüeñal | 1 |
| 33 | 0064351 | Screw M8 x 1.25-40 | Vis | Tornillo | 2 |
| 34 | 0064352 | Connecting rod cap | Capuchon connectant de tringle | Tapa de biela | 1 |
| 35 | 0064353 | Bearing 6207 | Roulement | Cojinete | 1 |
| 36 | 0064354 | Connecting rod body | Corps connectant de tringle | Cuerpo de biela | 1 |
| 37 | 0064355 | Piston pin | Goupille | Pasador | 1 |
| 38 | 0064356 | Piston pin circlip | Attache | Presilla | 2 |
| 39 | 0064357 | Piston | Piston | Pistón | 1 |
| 40 | 0064358 | Piston ring set | Jeu de segments | Juego de anillos | 1 |
| 41 | 0064359 | Gasket | Joint | Empaquetadura | 1 |
| 42 | 0064360 | Screw M6 x 8 | Vis | Tornillo | 1 |
| 43 | 0064361 | Locating sheet | Feuille localisant | Hoja que localiza | 1 |
| 44 | 0064362 | Screw M6 x 10 | Vis | Tornillo | 2 |
| 45 | 0064363 | Low oil sensor | Détecteur de bas niveau d'huile | Sensor de bajo nivel de aceite | 1 |
| 46 | 0064364 | Oil gauge | Jauge | Manómetro | 1 |
| 47 | 0064365 | Oil gauge seal | Joint | Sello | 1 |
| 48 | 0064366 | Screw M8 x 45 | Vis | Tornillo | 8 |
| 49 | 0064367 | Crankcase cover | Couvercle | Tapa | 1 |
| 50 | 0064368 | Oil seal | Joint | Sello | 2 |
| 51 | 0064369 | Ring seal | Joint | Sello | 1 |
| 52 | 0064370 | Oil cover | Couvercle | Tapa | 1 |
| 53 | 0064371 | Washer | Rondelle | Arandela | 1 |
| 54 | 0064372 | Governing gear set | Adapter la série | Conjunto engranado | 1 |
| 55 | 0064373 | Gasket | Joint | Empaquetadura | 1 |
| 56 | 0064380 | Dowel pin | Goupille | Pasador | 2 |
| 57 | 0064381 | Exhaust valve | Soupape d'échappement | Válvula de escape | 1 |
| 58 | 0064382 | Intake valve | Soupape d'admission | Válvula de admisión | 1 |
| 59 | 0064383 | Cylinder head | Tête de cylindre | Culata de cilindro | 1 |
| 60 | 0064384 | Bolt | Boulon | Perno | 2 |
| 61 | 0064385 | Bolt | Boulon | Perno | 2 |
| 62 | 0064386 | Exhaust gasket | Joint | Sello | 1 |
| 63 | 0064387 | Screw M10 x 1.25-70 | Vis | Tornillo | 4 |
| 64 | 0064388 | Oil seal | Joint | Sello | 1 |
| 65 | 0064389 | Valve spring | Ressort | Resorte | 2 |
| 66 | 0064390 | Valve retainer | Retenue | Retenedor | 2 |
| 67 | 0064391 | Valve cotter | Goupille fendue | Chaveta | 2 |
| 68 | 0064392 | Rocker arm pin | Goupille | Pasador | 1 |

**ENGINE / MOTEUR / MOTOR
PARTS LIST / LISTE DES PIÈCES / LISTA DE PIEZAS**

| REF. NO. | PART NO. | DESCRIPTION | DESCRIPTION | DESCRIPCIÓN | QTY |
|----------|----------|-----------------------|---------------------------|------------------------|-----|
| 69 | 0064393 | Push rod | Tige | Varilla | 2 |
| 70 | 0064394 | Rocker arm | Bras de bascule | Brazo de balancín | 2 |
| 71 | 0064395 | Bolt | Boulon | Perno | 2 |
| 72 | 0064396 | Nut | Écrous | Tuerca | 2 |
| 73 | 0064397 | Gasket | Joint | Empaquetadura | 1 |
| 74 | 0064398 | Air shroud | Enveloppe | Guardera | 1 |
| 75 | 0064399 | Cylinder head cover | Couvercle | Tapa | 1 |
| 76 | 0064400 | Screw M6 x 28 | Vis | Tornillo | 4 |
| 77 | 0064401 | Gas hose | Flexible | Manguera | 1 |
| 78 | 0064402 | Gasket | Joint | Empaquetadura | 2 |
| 79 | 0064403 | Gasket | Joint | Empaquetadura | 1 |
| 80 | 0064404 | Carburetor | Carburateur | Carburador | 1 |
| 81 | 0064405 | Gasket | Joint | Empaquetadura | 1 |
| 82 | 0064406 | Air filter case | Cas | Caso | 1 |
| 83 | 0064407 | Plate | Plaque | Placa | 1 |
| 84 | 0064408 | Nut M8 | Écrous | Tuerca | 2 |
| 85 | 0064409 | Screw M6 x 18 | Vis | Tornillo | 1 |
| 86 | 0064410 | Element fitting plate | Plaque | Placa | 1 |
| 87 | 0064411 | Air filter element | Filtre à air | Filtro de aire | 1 |
| 88 | 0064412 | Air filter cover | Couvercle du filtre à air | Tapa de filtro de aire | 1 |
| 89 | 0064413 | Screw M6 x 30 | Vis | Tornillo | 2 |
| 90 | 0064414 | Screw M8 x 16 | Vis | Tornillo | 1 |
| 91 | 0064415 | Adjusting plate | Plaque ajustant | Plato de ajuste | 1 |
| 111 | Note C | Spark plug | Bougie | Bujía | 1 |

Note C: Use Champion RN14YC spark plug or equivalent. Spark plug gap = .028/.031 inches (0.7/0.8 mm)

Remarque C: L'usage Champion RN14YC bougie ou l'équivalent. L'écart pour la bougie = .028/.031 pouces (0.7/0.8 mm)

Nota C: El uso Champion bujía RN14YC o equivalente. El espacio para la bujía = pulgadas .028/.031 (0.7/0.8 Mm)