

PORTABILITY KIT INSTALLATION

TOOLS REQUIRED: 7/16", 1/2", 9/16", and 5/8" sockets and ratchets, block(s) of wood (minimum of 6" tall).
Refer to the parts list on page 37.

WHEEL INSTALLATION

1. Block up end of generator opposite the fuel tank cap to install wheel kit.
2. Insert wheel spacer (item 45) into the center of the wheel (item 31).
3. Slide 3/8 x 4.25" bolt (item 35) and 3/8 washer (item 47) through the wheel (item 31), then through the wheel bracket on the carrier, with the offset side of the wheel hub against the wheel bracket.
4. Thread 3/8 nyloc nut (item 36) onto the bolt and tighten to securely clamp the wheel assembly to the tubing.
5. Repeat above instructions for the remaining wheel.

FOOT INSTALLATION

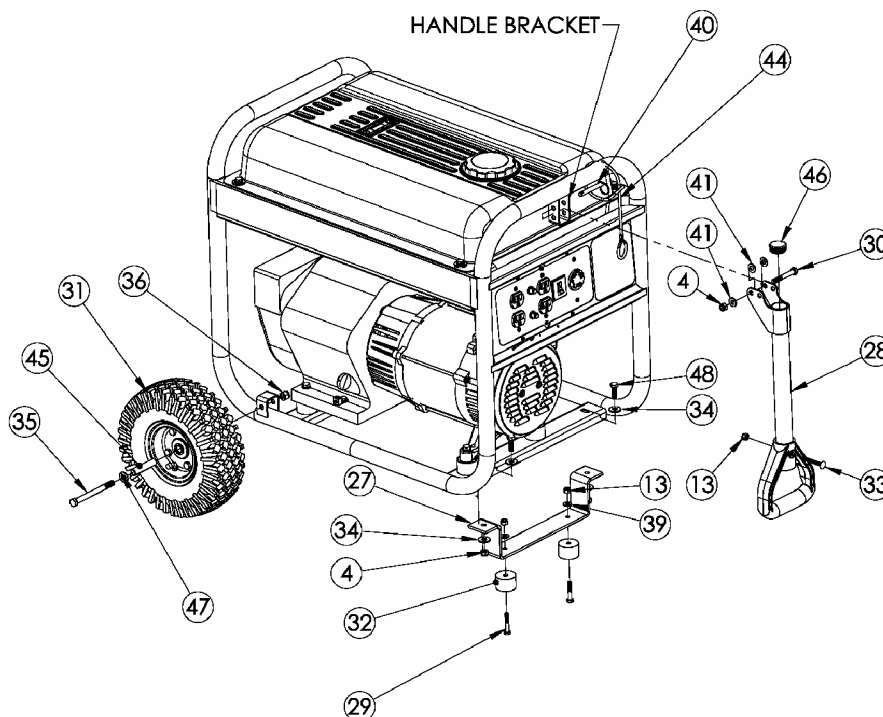
1. Assemble the rubber feet (item 32) to the foot bracket (item 27) using a 1/4-20 x 1.5" bolt (item 29). Thread a 1/4 washer (item 39) and a 1/4 nyloc nut (item 13) to the bolt to secure the assembly. **Caution: Do not over tighten so that the foot material collapses.**
2. Blocking up the alternator side of the generator, place the foot bracket under the carrier channel. Thread a 5/16-18 x 1" bolt (item 48) with a 5/16 washer (item 34) through the mounting holes and thread a 5/16 washer (item 34) and a 5/16 nyloc nut (item 4) to the bolt to secure the foot bracket to the carrier.

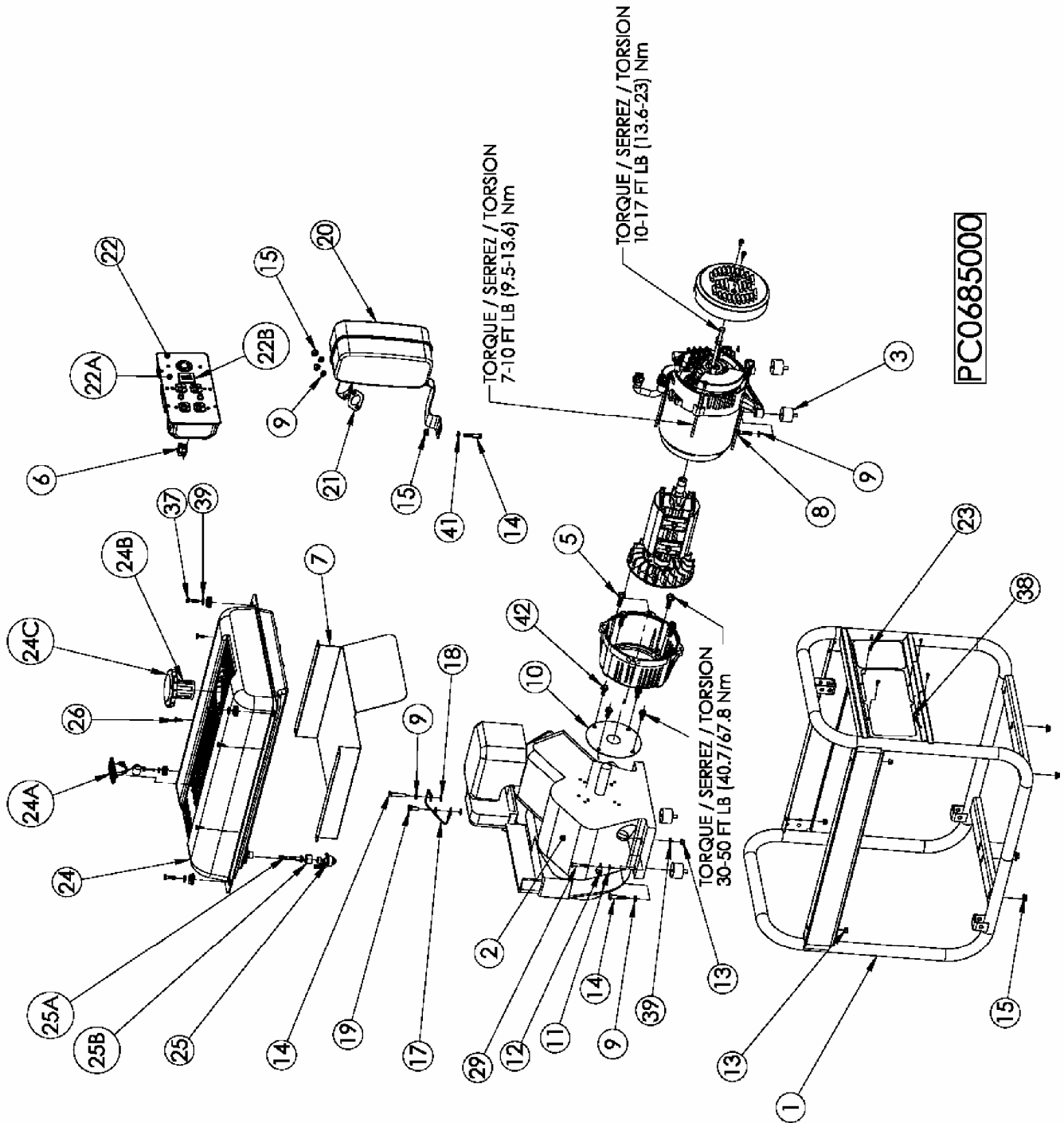
HANDLE INSTALLATION

1. Place handle (item 28) on carrier on same end as feet, as shown in the diagram.
2. Slide 5/16 x 2.25" bolt (item 30) through handle, handle bracket, and 5/16 washers (item 41) as shown in diagram and secure with 5/16" nyloc nut (item 4). Tighten until handle is securely clamped to the bracket.

LOCKING HANDLE

1. Attach the lanyard (item 44) to the release pin (item 40) and carrier as shown in the illustration.
2. To lock the handle (item 28) in the extended position, align the holes in the handle bracket with the holes in the carrier bracket and insert the release pin (item 40).





PC0685000

PARTS LIST / LISTE DES PIÈCES / LISTA DE PIEZAS

REF. NO.	PART NO.	DESCRIPTION	DESCRIPTION	DESCRIPCIÓN	QTY
1	0065827	Carrier, assembly	Ensemble transport	Transportador, conjunto	1
2	0065665	Engine Mitsubishi 10HP	Moteur	Motor	1
3	0051094	Isolator	Sectionneur	Aislador	4
4	0048736	Nut, nyloc 5/16-18	Écrous nyloc 5/16-18	Tuerca, nyloc 5/16-18	3
5	0057512	Bolt whz 3/8-16 x 1.25	Boulon	Perno	4
6	0062196	Connector, panel	Connecteur, tableau	Conector, panel	1
7	0065770	Shield, heat	Écran de chaleur	Pantalla para el calor	1
8	Note A	Bolt, hex 5/16-18 x 1 1/4	Boulon	Perno	3
9	Note A	Washer, lock 5/16	Contre-écrou 5/16	Arandela, de cierre 5/16	6
10	0065771	Plate cover adapter	Plaque	Placa	1
11	Note A	Washer, star external 1/4	Rondelle à dents externa 1/4	Arandela, estrella 1/4	1
12	0008854	Lug, ground	Oeillet de mise à la terre	Terminal, tierra	1
13	0040832	Nut, nyloc 1/4-20	Écrous nyloc 1/4-20	Tuerca, nyloc 1/4-20	8
14	Note A	Bolt, 5/16-18 x 1 1/2	Boulon	Perno	2
15	0057254	Nut, flg 5/16-18	Écrous 5/16-18	Tuerca, 5/16-18	6
17	0049224	Assembly, ground wire	Ensemble fil de masse tressé a tierra	Conjunto, cable trenzado	1
18	Note A	Washer, star external 5/16	Rondelle à dents externa 5/16	Arandela, estrella 5/16	2
19	Note A	Bolt, hex 5/16-18 x 3/4	Boulon, tête hex 5/16-18 x 3/4	Perno	1
20	0065769	Muffler	Silencieux	Silenciador	1
21	0061129	Gasket	Joint	Empaquetadura	1
22	0065849	Panel, wired	Tableau complet câblé	Panel, cabeado completo	1
22A	0049071	Circuit Protector 20 amp	Protecteur de circuit 20 amp	Protector de circuito 20 amp	2
22B	0062199	Circuit Protector 25 amp dual	Protecteur de circuit 25 amp	Protector de circuito 25 amp	1
23	0062020	Screw #6-19 x .50 Torx	Vis	Tornillo	4
24	0065733	Fuel tank assembly	Ensemble complet du réservoir	Conjunto tanque	1
24A	0061817	Fuel Gauge/Screws	Combustible Indicateur/Tornillos	Esence Écartement/Visser	1
24B	0061942	Strainer Basket	Passoire Panier	Colador Canasta	1
24C	0061816	Fuel Cap	Capuchon	Tapa de combustible	1
25	0061811	Fuel Shut Off	Fermeture d'essence	Apagado combustible	1
25A	0061876	Filter, fuel valve and washer	Filtre et rondelles	Filtro y arandela	1
25B	0061875	Nut, fuel valve	Écrous	Tuerca	1
26	0064138	Screw #10 x .75 truss hd	Vis	Tornillo	6
27	0063546	Bracket, foot	Support de pied	Soporte del pie	1
28	0064552	Handle	Poignée	Manija	1
29	Note A	Bolt, 1/4-20 x 1 1/2	Boulon	Perno	3
30	Note A	Bolt, 5/16 x 2 1/4	Boulon	Perno	1
31	0057704	Wheel	Roue	Rueda	2
32	0055894	Rubber Foot	Pied	Pie	2
33	Note A	Bolt, carriage 1/4 x 2	Boulon	Perno	1
34	0049352	Washer, flat 5/16 W	Rondelles plates 5/16 large	Arandela, plana 5/16 lejos	4
35	Note A	Bolt, 3/8-16 x 4.25	Boulon	Perno	2
36	0057578	Nut, nyloc 3/8-16	Écrous nyloc 3/8-16	Tuerca, nyloc 3/8-16	2
37	Note A	Bolt, 1/4-20 x 1	Boulon	Perno	4
38	0055982.01	Cord Keeper™	Cord Keeper™	Cord Keeper™	2
39	Note A	Washer, flat 1/4	Rondelle plates 1/4	Arandela, plana 1/4	7
40	0062502	Pin, release	Épingle de relâchement	Alfileres de la liberación	2
41	Note A	Washer, flat 5/16	Rondelle plates 5/16	Arandela, plana 5/16	3
42	0057514	Bolt whz 5/16-24 x .75	Boulon	Perno	4
44	0062174	Lanyard	Lanyard	Acollador	1
45	0062433	Wheel spacer	Bague d'espacement	Espaciador de la rueda	2
46	0058955	Cap, plastic	Capuchon	Tapa	1
47	0055042	Washer, flat 3/8	Rondelles plates 3/8	Arandela, plana 3/8	2
48	Note A	Bolt, 5/16-18 x 1	Boulon	Perno	2

Note A: These are standard parts available at your local hardware store.



WARNING: To avoid possible personal injury or equipment damage, a registered electrician or an authorized service representative should perform installation and all service. Under no circumstances should an unqualified person attempt to wire into a utility circuit.

Remarque A: Ces pièces sont des pièces standard disponibles en quincaillerie.

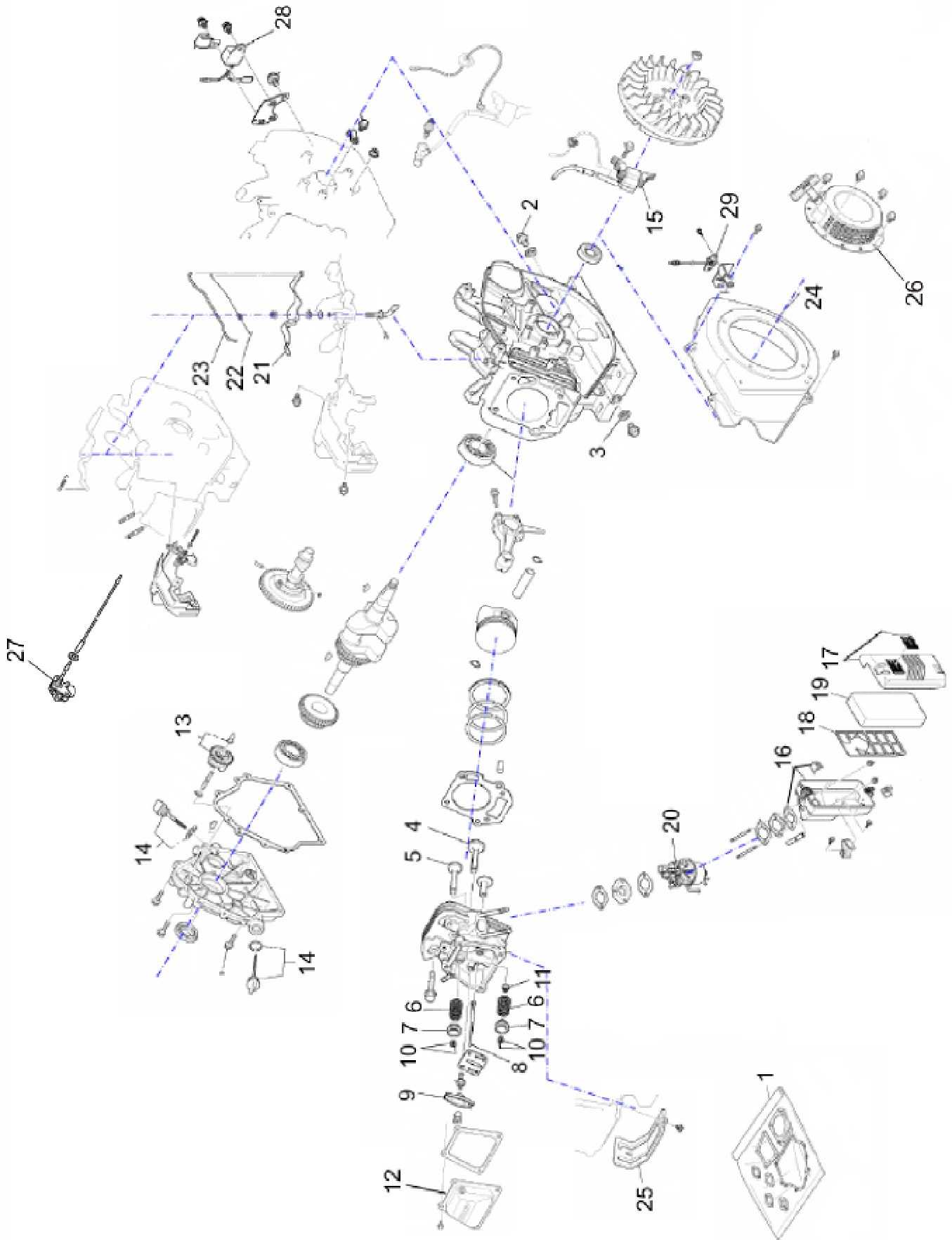


AVERTISSEMENT: Pour éviter toute blessure personnelle ou dommage à l'équipement, l'installation et tout entretien devraient être effectués par un électricien qualifié ou un préposé au service autorisé. En aucun cas, une personne non-qualifiée ne devrait essayer de faire le raccord au circuit principal.

Nota A: Estas son piezas estándar disponibles en su ferretería local.



ADVERTENCIA: Para evitar posibles lesiones físicas o daños materiales, es necesario que la instalación y todo el servicio sea realizado por un electricista matriculado o representante de servicio autorizado. Bajo ninguna circunstancia debe permitirse que una persona que no está capacitada trate de manipular cables dentro del circuito de servicio eléctrico.



PARTS LIST / LISTE DES PIÈCES / LISTA DE PIEZAS

REF. NO.	PART NO.	DESCRIPTION	DESCRIPTION	DESCRIPCIÓN	QTY
1	0065734	Gasket kit	Jeu de joint	Juego de empaquetadura	1
2	0065735	Drain plug	Bouchon	Tapón	2
3	0065736	Gasket	Joint	Empaquetadura	2
4	0065737	Intake valve	Soupape d'admission	Válvula de admisión	1
5	0065738	Exhaust valve	Soupape d'échappement	Válvula de escape	1
6	0065739	Valve spring	Ressort	Resorte	2
7	0065740	Valve retainer	Retenue	Retenedor	2
8	0065741	Push rod	Tige	Varilla	2
9	0065742	Rocker arm	Bras de bascule	Brazo de balancín	2
10	0065743	Valve cotter	Goupille fendue	Chaveta	4
11	0065744	Valve stem seal	Joint	Sello	1
12	0065745	Head cover	Couvercle	Tapa	1
13	0065746	Governor gear assy	Ensemble de engrenage	Conjunto, engranaje	1
14	0065747	Oil gauge	Jauge	Manómetro	2
15	0065748	Ignition coil	Bobine d'allumage	Rollo de ignición	1
16	0065749	Cleaner case	Cas	Caso	1
17	0065750	Cleaner cover	Couvercle	Tapa	1
18	0065751	Grid	Grille	Cuadrícula	1
19	0065752	Cleaner element	Élément	Elemento	1
20	0065753	Carburetor	Carburateur	Carburador	1
21	0065754	Lever, gov	Levier	Palanca	1
22	0065756	Spring, rod	Ressort	Resorte	1
23	0065755	Rod, gov	Tige	Varilla	1
24	0065757	Fan cover	Ventilateur le couvercle	Ventilador el tapa	1
25	0065758	Cylinder cover	Couvercle	Tapa	1
26	0065759	Engine recoil assembly	Moteur recule l'assemblée	Asamblea de retráctil de motor	1
27	0065760	Low oil sensor	Détecteur de bas niveau d'huile	Sensor de bajo nivel de aceite	1
28	0065761	Oil sensor module	Module	Módulo	1
29	0065762	Stop switch	Interrupteur	Interruptor	1

PARTS LIST / LISTE DES PIÈCES / LISTA DE PIEZAS

Ref No.	Part No.	Description	Description	Descripción	Qty
60A	0065813	Adapter, engine	Adaptateur pour moteur	Adaptor, motor	1
60B	0065816	Rotor	Rotor	Rotor	1
60C	0065815	Stator	Stator	Estator	1
60D	0065814	Band, stator cover	Bande	Banda	1
60E	0065818	Bolt, M6 x 155	Boulon	Perno	4
60F	0065819	Support, bearing	Support, roulement	Soporte, Cojinete	1
60G	0065820	Brush module	Brosser le module	Cepille módulo	1
60H	0065821	AVR module	La tension automatique régulatrice	El regulador automático del voltaje	1
60I	0065822	Cover, end	Couvercle	Tapa	1
60J	0065817	Bolt hex M5 x 70	Boulon, tête hex	Perno, hexagonal	1

