

# Parts Manual



## Models

Mfg. No.	Description
7800882	BTPD22675, 22" 7.25GT Self-Propelled Walk Behind Mower (2012)

Manual Part No. 1754654  
Revision -  
Rev. Date: 2/21/2012

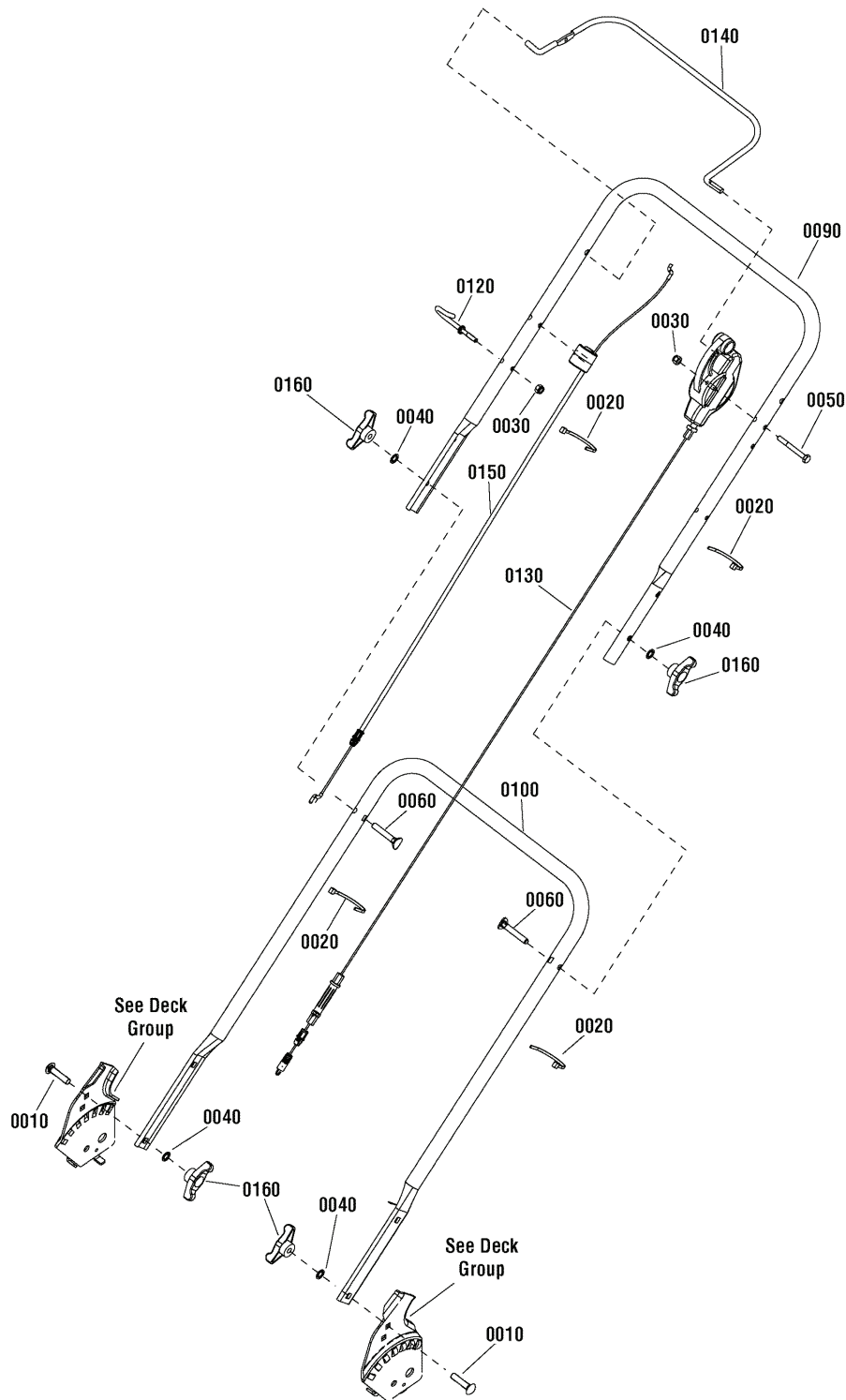
Not for  
Reproduction

<b>PRODUCT COMPONENTS</b>	<b>PAGES</b>
Handle & Controls Group .....	4
Engine Group .....	6
Transmission Group .....	8
Wheels Group .....	10
Decals Group .....	12
Deck Group .....	14
<b>Torque Specification Chart .....</b>	<b>Inside Back Cover</b>

Not for  
Reproduction

## Handle & Controls Group

NOTE: Unless noted otherwise,  
use the standard hardware torque  
specification chart.



The above parts group applies to the following Mfg. Nos.:

7800882 - BTPD22675

## Handle & Controls Group

REF NO	PART NO.	QTY.	DESCRIPTION
0010	1931337SM	2	BOLT, Carriage, Short Neck, 5/16-18 x 1-1/2, G5
0020	7024649YP	4	WIRE TIE, 11 Inch Std Blk Nylon
0030	7076978SM	2	NUT, Hex Lock, 1/4-20
0040	7090391SM	4	WASHER, Internal Tooth Lock, 5/16"
0050	7090892YP	1	CAPSCREW, Hex Head, 1/4-20 x 2-1/4, GR 5
0060	7091189YP	2	BOLT, Carriage, Curved Head, 5/16-18 x 2
0090	7300705AMA	1	HANDLE, Upper
0100	7301013AYP	1	HANDLE, Lower
0120	071530MA	1	GUIDE, Rope, 1/4-20 thread
0130	1101670MA	1	CONTROL, Drive, Single Speed
0140	7103975AYP	1	BAIL, OPC Propelled
0150	7103977YP	1	CABLE, Bail
0160	7035744YP	4	KNOB, Wing, 5/16-18

Not for  
Reproduction

### Footnotes

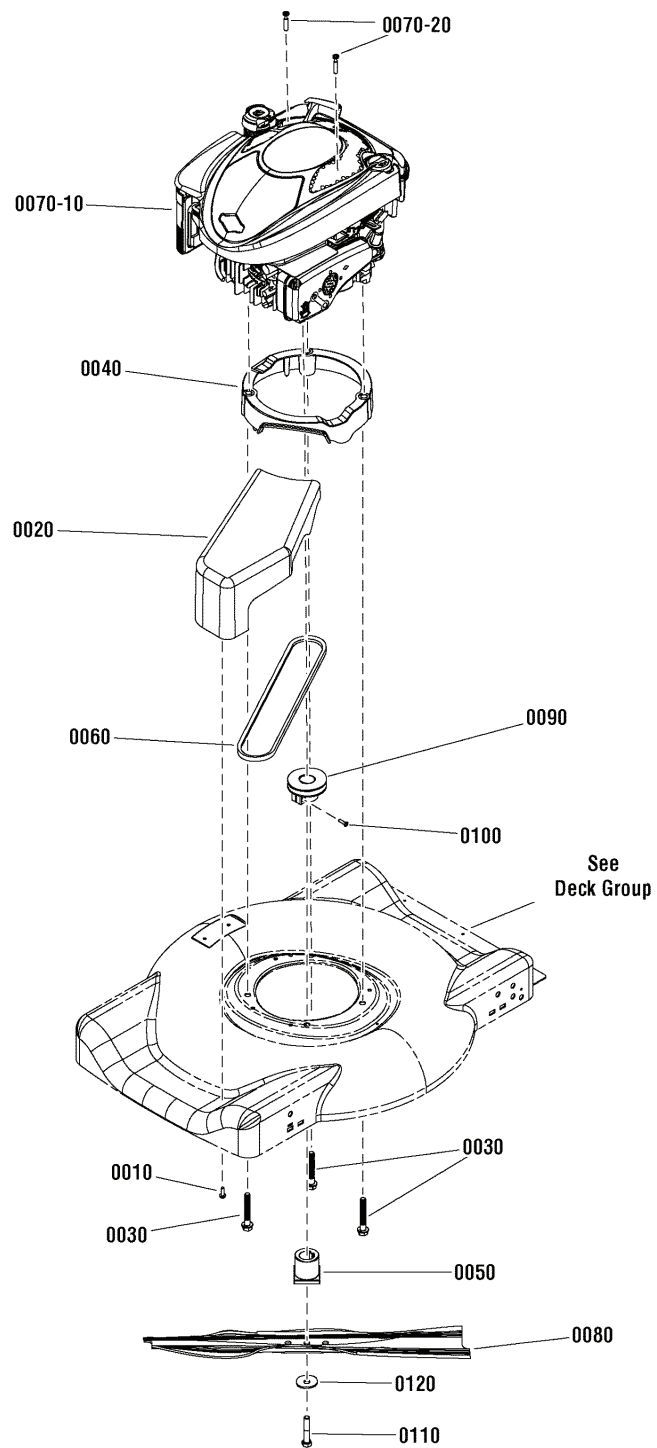
---

The above parts group applies to the following Mfg. Nos.:

7800882 - BTPD22675

## Engine Group

NOTE: Unless noted otherwise,  
use the standard hardware torque  
specification chart.



The above parts group applies to the following Mfg. Nos.:

7800882 - BTPD22675

## Engine Group

REF NO	PART NO.	QTY.	DESCRIPTION
0010	26X313MA	1	SCREW, #10-24 x 1.38 Black
0020	1101830MA	1	COVER, Belt, 22" Side Discharge, Front Wheel Drive
0030	025X11MA	3	BOLT, 3/8-16 x 2-1/2" Hex Washer Face
0040	1101786MA	1	ASSEMBLY, Engine Spacer, 2122FDTM
0050	7104074YP	1	BLADE HUB, 22" Front Wheel Drive
0060	7104084YP	1	BELT, Drive 22" WBM Single Speed
0070-10	128M02-0115-F1	1	* ENGINE, 7.25TP Briggs & Stratton (Engine Model: 128M02-0115-F1)
0070-20	691138	2	SCREW, Pan HD Cross Recess, Tapping
0080	7103288YP	1	BLADE, Wave, Steel Deck
0090	7100763MA	1	PULLEY, Engine, 22" Deck, Single Speed
0100	26X303MA	1	SCREW, #8-11 Poly Thread x .63, Pan Head Cross Recess
0110	7090167SM	1	CAPSCREW, Hex Head, 3/8-16 x 2, GR 5
0120	7012063SM	1	WASHER, Cone

Not for  
Reproduction

### Footnotes

Note\* To verify your specific engine model, please reference the ID Tag located on your engine. See your local Briggs & Stratton distributor for parts and service.

---

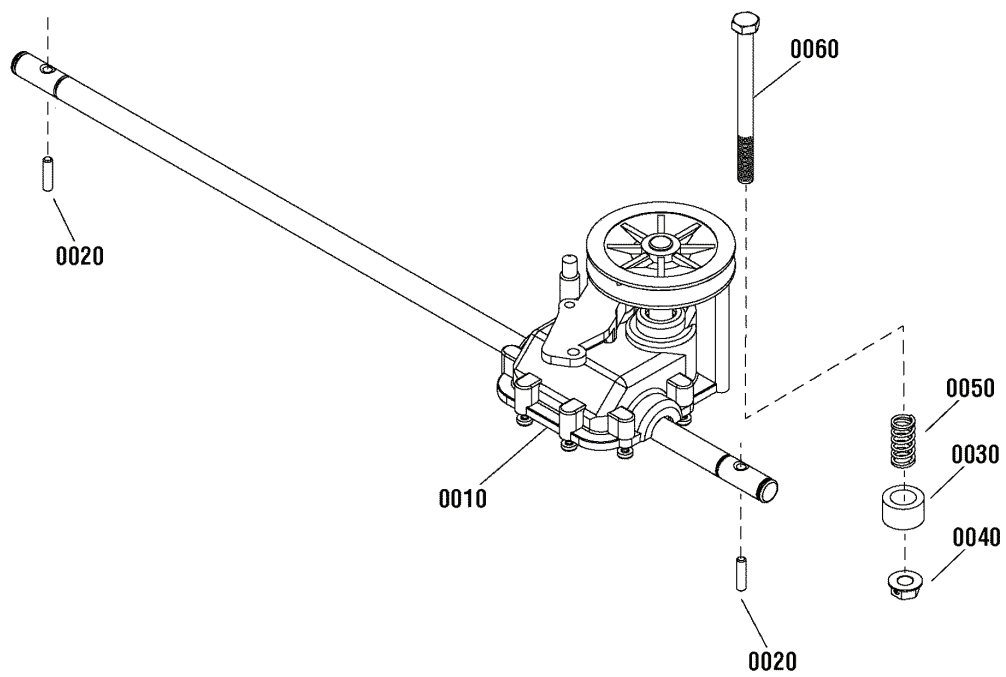
**The above parts group applies to the following Mfg. Nos.:**

7800882 - BTPD22675

## Transmission Group

---

NOTE: Unless noted otherwise,  
use the standard hardware torque  
specification chart.



---

The above parts group applies to the following Mfg. Nos.:

7800882 - BTPD22675



## Transmission Group

---

REF NO	PART NO.	QTY.	DESCRIPTION
0010	7101206MA	1	TRANSMISSION, 22" WBM Single Speed, Front Wheel Drive
0020	7101270YP	2	PIN, Drive
0030	7102671YP	1	SPACER, Drive Transmission
0040	015X88MA	1	NUT, Hex Flange Lock, 5/16-18
0050	164X27MA	1	SPRING, Compression
0060	7091058YP	1	SCREW, Hex Head Cap, 5/16-18 x 3-3/4" GR 5

Not for  
Reproduction

### Footnotes

---

The above parts group applies to the following Mfg. Nos.:

7800882 - BTPD22675



## **Wheels Group**

<b>REF NO</b>	<b>PART NO.</b>	<b>QTY.</b>	<b>DESCRIPTION</b>
0010	7014341YP	4	RING, Retaining
0020	7091585SM	4	NUT, 3/8-16 Hex Center Lock, YZ
0030	7101207YP	2	GEAR, PINION, 22 WBM, FWD
0040	7101402YP	2	SHIELD, DUST, 22 WBM, FWD
0050	7103500YP	2	WHEEL, 8" x 2" Drive, w/DB Tread P-290 Satin Black
0060	7103539YP	4	HUBCAP, 8"& 9" Wheel Spoked, P-391 St Yellow
0070	7103541YP	2	WHEEL, 8" X 2" Idle w/Db Tread, Brute, Satin Black
0100	001X85MA	2	BOLT, Hex, 3/8-16 x 3/4
0110	17X169MA	4	WASHER, FLAT, 1" OD X .387 ID
0140	7600116YP	1	KIT, RF, Height-Of-Cut, Front Wheel Drive, 2N1
0150	7600115YP	1	KIT, LF, Height-Of-Cut, Front Wheel Drive, 2N1
0160	7600114YP	1	KIT, RR, Height-Of-Cut, 22" WBM 2N1
0170	7600113YP	1	KIT, LR, Height-Of-Cut, 22" WBM 2N1
0180	7103542YP	4	GRIP, Height Latch, P-391-St, Yellow

Not for  
Reproduction

### **Footnotes**

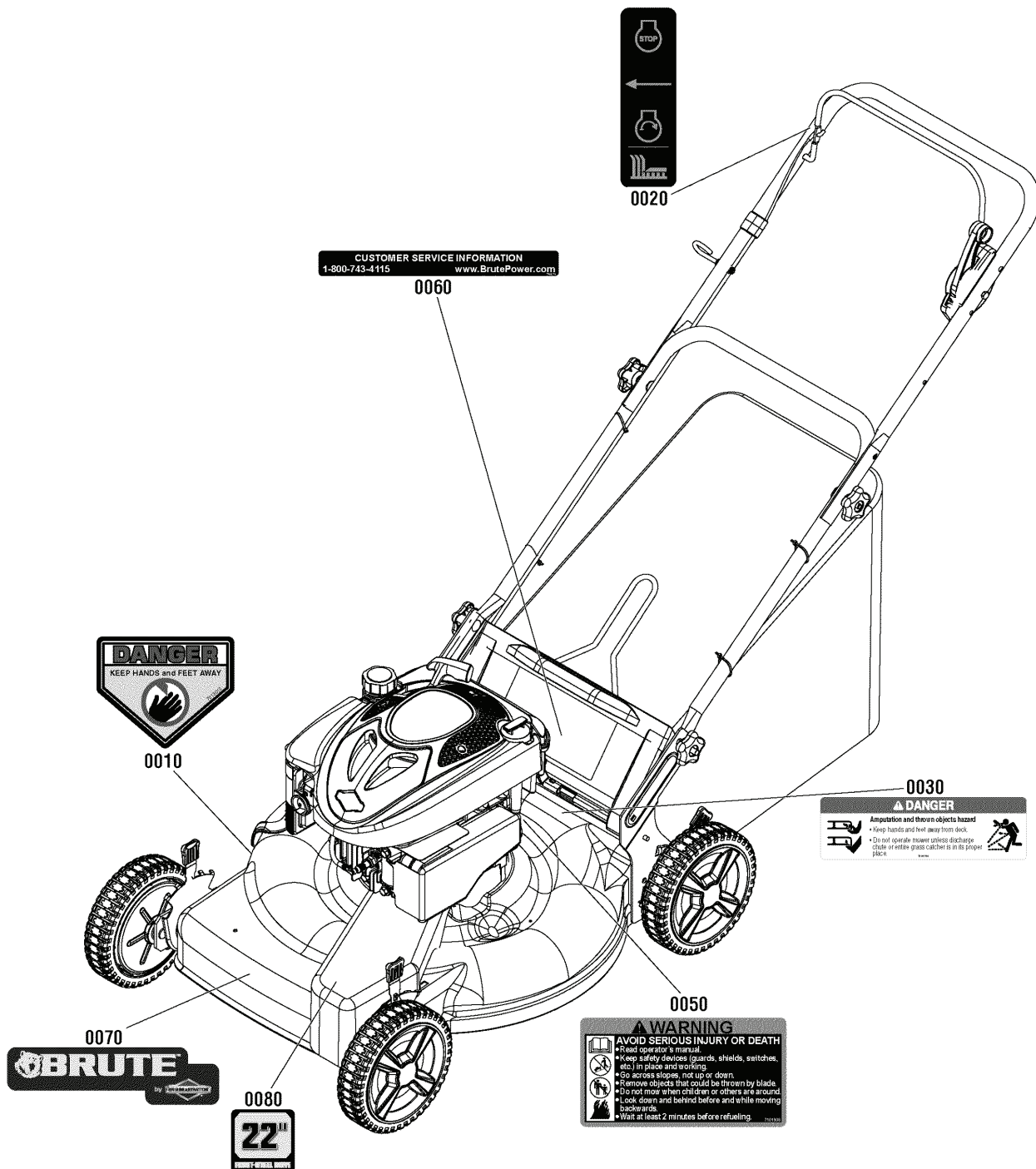
---

**The above parts group applies to the following Mfg. Nos.:**

7800882 - BTPD22675

# Decals Group

NOTE: Unless noted otherwise, use the standard hardware torque specification chart.



The above parts group applies to the following Mfg. Nos.:  
7800882 - BTPD22675

## ***Decals Group***

<b>REF NO</b>	<b>PART NO.</b>	<b>QTY.</b>	<b>DESCRIPTION</b>
0010	7013010SM	1	DECAL, Danger, Cut Finger
0020	7029782MA	1	DECAL, OPC Bail International Symbol
0030	7101110YP	1	DECAL, Danger, Deck, MY 07.5
0050	7101908YP	1	DECAL, Warning, Walk-Behind Mower
0060	7102372YP	1	DECAL, Customer Service, Brute
0070	7103545YP	1	DECAL, Brute Walk-Behind Mower
0080	7104141YP	1	DECAL, 22" Front Wheel Drive Brute

Not for  
Reproduction

### **Footnotes**

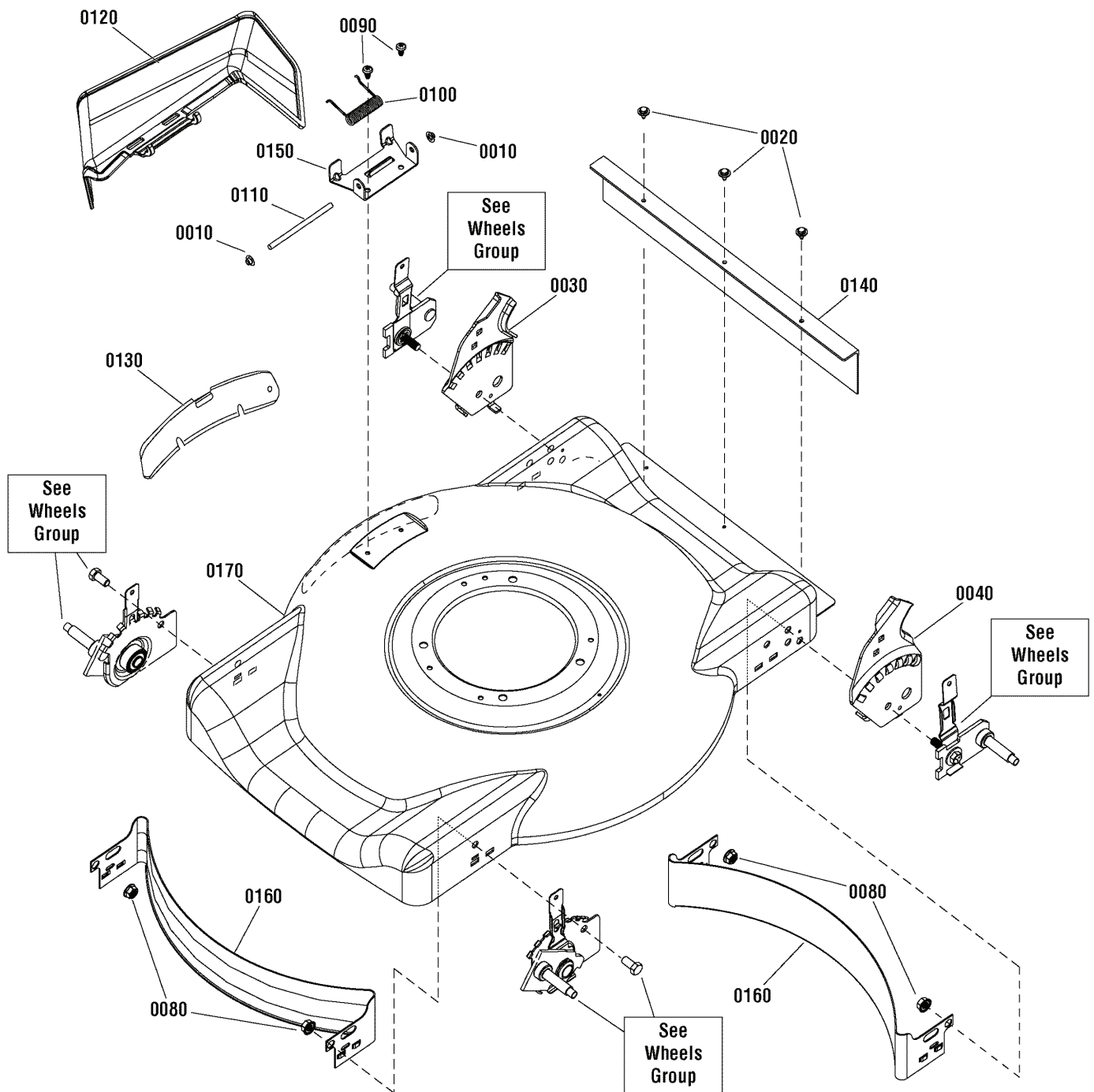
---

**The above parts group applies to the following Mfg. Nos.:**

7800882 - BTPD22675

## Deck Group

NOTE: Unless noted otherwise,  
use the standard hardware torque  
specification chart.



The above parts group applies to the following Mfg. Nos.:  
7800882 - BTPD22675

## Deck Group

REF NO	PART NO.	QTY.	DESCRIPTION
0010	7091020YP	2	NUT, Push, 1/4
0020	7091286YP	3	SCREW, Self Tap, SEMS, #10-24 x 1/2
0030	7300850AYP	1	BRACKET, Handle, RH
0040	7300851AYP	1	BRACKET, Handle, LH
0080	7900053MA	4	NUT, 3/8-16 Hex Flange Lock, GR 5
0090	7900067YP	2	SCREW, Pan Head, Self Tap, Torx, 1/4-20 x 1/2
0100	0166X5MA	1	SPRING, Torsion, Chute
0110	215X11ZMA	1	ROD, Pivot, Mulch Cover
0120	672421MA	1	CHUTE, Plastic Side Discharge
0130	672422ZMA	1	PLATE, Mulch
0140	672738MA	1	GUARD, Rear
0150	7300852ZYP	1	BRACKET, Chute
0160	7300853ZYP	2	BAFFLE, 22" Side Discharge
0170	7301115ZYP	1	DECK, 22" WBM, Side Discharge

Not for  
Reproduction

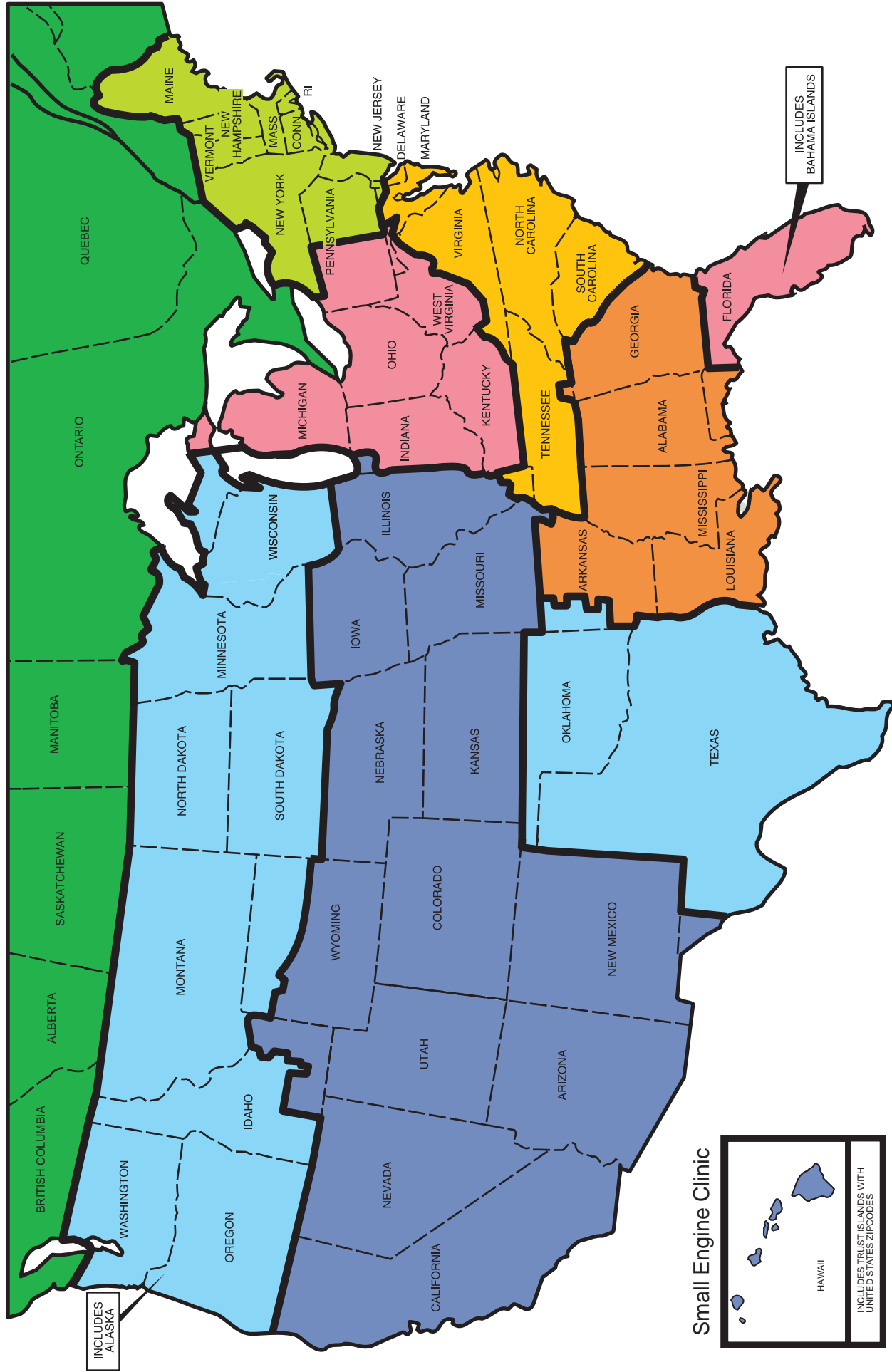
## Footnotes

---

The above parts group applies to the following Mfg. Nos.:

7800882 - BTPD22675

# IDN Network





**Briggs & Stratton Corporation**  
**INTEGRATED DISTRIBUTOR NETWORK**

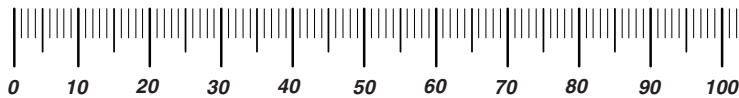
Midwest Engines	700 Enterprise Rd Aurora, IL 60504	<a href="http://www.mwe.net">www.mwe.net</a>	(800) 683-8484
Central Power Systems	3700 Paragon Dr Columbus, OH 43228	<a href="http://www.centralpower.com">www.centralpower.com</a>	(800) 444-7774
Atlantic Power	20 Empire Stat Rd Castleton, NY 12033	<a href="http://www.atlanticpowerinc.com">www.atlanticpowerinc.com</a>	(800) 456-5692
Preferred Power Inc	6509-A Northpark Blvd Charlotte, NC 28216	<a href="http://www.centralpower.com">www.centralpower.com</a>	(800) 331-7164
Central Power Systems	3700 Paragon Dr Columbus, OH 43228	<a href="http://www.centralpower.com">www.centralpower.com</a>	(800) 444-7774
Magneto Power LLC	1000 W. Donges Bay Rd Suite 100 Mequon, WI 53092	<a href="http://www.magnetopower.com">www.magnetopower.com</a>	(800) 733-7388
Sedco, Inc	225 Henry D. Robinson Blvd Pendergrass, GA 30567	<a href="http://www.sedcoinc.com">www.sedcoinc.com</a>	(800) 346-4260
Power Source Canada, LTD	2815 Bristol Circle, Unit 1 Oakville, ON L6H 6X5	<a href="http://www.powersourcecanada.ca">www.powersourcecanada.ca</a>	(905) 829-0006

Not for  
Reproduction

# Hardware Identification & Torque Specifications

Torque Specification Chart								
FOR STANDARD METRIC MACHINE HARDWARE (Tolerance ± 20%)								
Property Class	5.6		8.8		10.9		12.9	
	Class 5.6		Class 8.8		Class 10.9		Class 12.9	
Size Of Hardware	in/lbs		in/lbs		in/lbs		in/lbs	
	ft/lbs	Nm.	ft/lbs	Nm.	ft/lbs	Nm.	ft/lbs	Nm.
M3	5.88	.56	13.44	1.28	19.2	1.80	22.92	2.15
M4	13.44	1.28	30.72	2.90	43.44	4.10	52.56	4.95
M5	26.4	2.50	60.96	5.75	5.97	8.10	7.15	9.7
M6	44.64	4.3	7.3	9.9	10.3	14	12.1	16.5
M7	5.2	7.1	12.1	16.5	16.9	23	19.9	27
M8	7.7	10.5	17.7	24	25	34	29	40
M10	15	21	35	48	50	67	59	81
M12	26	36	61	83	86.2	117	103	140
M14	42	58	101	132	136	185	162	220
M16	64	88	147	200	210	285	250	340
M18	89	121	202	275	287	390	346	470
M20	126	171	290	390	405	550	486	660
M22	169	230	390	530	559	745	656	890
M24	217	295	497	375	708	960	840	1140
M27	320	435	733	995	1032	1400	1239	1680
M30	435	590	995	1350	1401	1900	1681	2280
M33	590	800	1349	1830	1902	2580	2278	3090
M36	759	1030	1740	2360	2441	3310	2935	3980
M39	988	1340	2249	3050	3163	4290	3798	5150

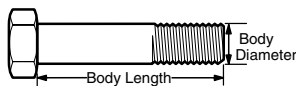
The guides and ruler furnished below are designed to help you select the appropriate hardware.



**Nut, M8**

Thread Diameter (mm)  
Inside Diameter (in)  
Threads per inch

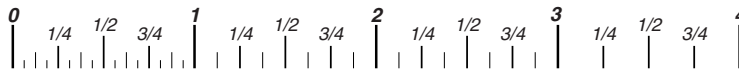
**Nut, 1/2-16**



**Screw, M8- 1.25 x 25**

Thread Diameter (mm)  
Body Diameter  
Distance between threads (mm)  
Threads per inch  
Body Length (mm)  
Body Length (in)

**Screw, 1/2- 16 x 2**



## Standard Hardware Sizing

When a washer or nut is identified as **1/2"** (M8), this is the *Nominal size*, meaning the *inside diameter* is 1/2 inch (8mm metric thread diameter); if a second number is present it represents the *threads per inch* (distance between threads).

When bolt or capscrew is identified as **1/2 - 16 x 2"** (M8 - 1.25 x 50 ), this means the *Nominal size*, or body diameter is 1/2 inch (8mm metric thread diameter), the second number, 16, represents the *threads per inch*, (*1.25 thread diameter*). The final number is the body length of the bolt or screw, 2 inches (50mm).

Torque Specification Chart						
FOR STANDARD MACHINE HARDWARE (Tolerance ± 20%)						
Hardware Grade	No Marks		No Marks		No Marks	
	SAE Grade 2		SAE Grade 5		SAE Grade 8	
Size Of Hardware	in/lbs		in/lbs		in/lbs	
	ft/lbs	Nm.	ft/lbs	Nm.	ft/lbs	Nm.
8-32	19	2.1	30	3.4	41	4.6
8-36	20	2.3	31	3.5	43	4.9
10-24	27	3.1	43	4.9	60	6.8
10-32	31	3.5	49	5.5	68	7.7
1/4-20	66	7.6	8	10.9	12	16.3
1/4-28	76	8.6	10	13.6	14	19.0
5/16-18	11	15.0	17	23.1	25	34.0
5/16-24	12	16.3	19	25.8	29	34.0
3/8-16	20	27.2	30	40.8	45	61.2
3/8-24	23	31.3	35	47.6	50	68.0
7/16-14	30	40.8	50	68.0	70	95.2
7/16-20	35	47.6	55	74.8	80	108.8
1/2-13	50	68.0	75	102.0	110	149.6
1/2-20	55	74.8	90	122.4	120	163.2
9/16-12	65	88.4	110	149.6	150	204.0
9/16-18	75	102.0	120	163.2	170	231.2
5/8-11	90	122.4	150	204.0	220	299.2
5/8-18	100	136	180	244.8	240	326.4
3/4-10	160	217.6	260	353.6	386	525.0
3/4-16	180	244.8	300	408.0	420	571.2
7/8-9	140	190.4	400	544.0	600	816.0
7/8-14	155	210.8	440	598.4	660	897.6
1-8	220	299.2	580	788.8	900	1,244.0
1-12	240	326.4	640	870.4	1,000	1,360.0

## NOTES

- These torque values are to be used for all hardware excluding: locknuts, self-tapping screws, thread forming screws, sheet metal screws and socket head setscrews.
- Recommended seating torque values for locknuts:
  - for prevailing torque locknuts - use 65% of grade 5 torques.
  - for flange whizlock nuts and screws - use 135% of grade 5 torques.
- Unless otherwise noted on assembly drawings, all torque values must meet this specification.

## Common Hardware Types

Hex Head Capscrew



Washer



Lockwasher

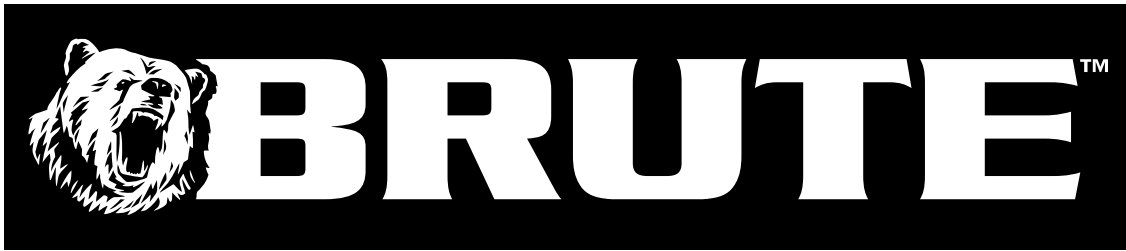
Carriage Bolt



Hex Nut

## Wrench & Fastener Size Guide

1/4" Bolt or Nut Wrench—7/16"	5/16" Bolt or Nut Wrench—1/2"	3/8" Bolt or Nut Wrench—9/16"	7/16" Bolt or Nut Wrench (Bolt)—5/8" Wrench (Nut)—11/16"	1/2" Bolt or Nut Wrench—3/4"
M6 Bolt or Nut Wrench—10mm	M8 Bolt or Nut Wrench—13mm	M10 Bolt or Nut Wrench—17mm	M12 Bolt or Nut Wrench—19mm	M14 Bolt or Nut Wrench—22mm



Not for  
Reproduction

**IT IS THE POLICY OF BRIGGS & STRATTON CORP. TO IMPROVE ITS PRODUCTS  
WHENEVER IT IS POSSIBLE AND PRACTICAL TO DO SO. WE RESERVE THE RIGHT TO  
MAKE CHANGES OR ADD IMPROVEMENTS AT ANY TIME WITHOUT INCURRING ANY  
OBLIGATION TO MAKE SUCH CHANGES ON PRODUCTS.**

BRUTE™ is a trademark of Briggs & Stratton Power Products.

Copyright© 2011 Briggs & Stratton Power Products Group. All rights reserved. No part of this page can be reproduced or transmitted in any form by any means without the express written permission of Briggs & Stratton Power Products Group.

**Briggs & Stratton Power Products Group**

12301 W. Wirth Street  
Wauwatosa, WI, 53222 USA

[www.brutepower.com](http://www.brutepower.com)

© Copyright 2012 by Briggs & Stratton Corporation  
Milwaukee, WI, USA. All rights reserved